

## Product datasheet for TA337642

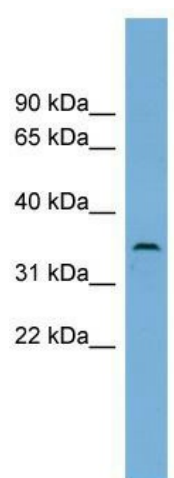
### C3orf49 Rabbit Polyclonal Antibody

#### Product data:

Product Type:	Primary Antibodies
Applications:	WB
Recommended Dilution:	WB
Reactivity:	Human
Host:	Rabbit
Isotype:	IgG
Clonality:	Polyclonal
Immunogen:	The immunogen for anti-C3orf49 antibody: synthetic peptide directed towards the middle region of human C3orf49. Synthetic peptide located within the following region: IQLDVVEAETEEITQGNTLLRARRTTKRLSVTSLPSGLQKGPYSPKKRPH
Formulation:	Liquid. Purified antibody supplied in 1x PBS buffer with 0.09% (w/v) sodium azide and 2% sucrose.
Purification:	Affinity Purified
Conjugation:	Unconjugated
Storage:	Store at -20°C as received.
Stability:	Stable for 12 months from date of receipt.
Predicted Protein Size:	33
Gene Name:	chromosome 3 open reading frame 49
Database Link:	<a href="#">NP_620163</a> <a href="#">Entrez Gene 132200 Human</a>
Background:	The function of this protein remains unknown.
Synonyms:	MGC17310
Note:	Immunogen Sequence Homology: Human: 100%; Dog: 86%; Rat: 86%; Horse: 79%; Bovine: 79%; Rabbit: 79%


[View online »](#)

## Product images:



WB Suggested Anti-C3orf49 Antibody Titration:  
0.2-1 ug/ml; Positive Control: OVCAR-3 cell lysate