

Product datasheet for **TA337640**

ZSWIM3 Rabbit Polyclonal Antibody

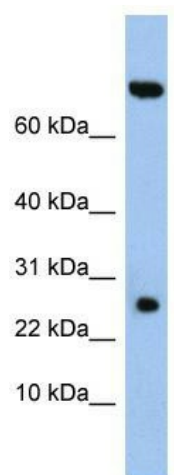
Product data:

Product Type:	Primary Antibodies
Applications:	WB
Recommended Dilution:	WB
Reactivity:	Human
Host:	Rabbit
Isotype:	IgG
Clonality:	Polyclonal
Immunogen:	The immunogen for anti-ZSWIM3 antibody: synthetic peptide directed towards the N terminal of human ZSWIM3. Synthetic peptide located within the following region: SVRFHNLNHGTSIREDILYVQVKFVCIRTQSNRKRTREADMCPAYLLLR
Formulation:	Liquid. Purified antibody supplied in 1x PBS buffer with 0.09% (w/v) sodium azide and 2% sucrose.
Purification:	Affinity Purified
Conjugation:	Unconjugated
Storage:	Store at -20°C as received.
Stability:	Stable for 12 months from date of receipt.
Predicted Protein Size:	77 kDa
Gene Name:	zinc finger SWIM-type containing 3
Database Link:	NP_542790 Entrez Gene 140831 Human Q96MP5
Background:	The specific function of this protein remains unknown.
Synonyms:	C20orf164; PPP1R174
Note:	Immunogen Sequence Homology: Pig: 100%; Rat: 100%; Horse: 100%; Human: 100%; Dog: 93%; Rabbit: 93%; Guinea pig: 93%; Mouse: 86%



[View online »](#)

Product images:



WB Suggested Anti-ZSWIM3 Antibody Titration:
0.2-1 ug/ml; ELISA Titer: 1: 312500; Positive
Control: DU145 cell lysate