

## Product datasheet for **TA337639**

### Cst6 Rabbit Polyclonal Antibody

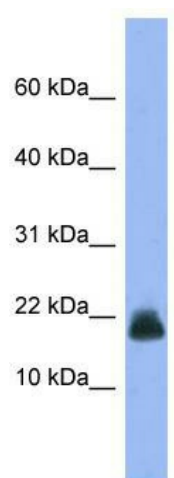
#### Product data:

Product Type:	Primary Antibodies
Applications:	WB
Recommended Dilution:	WB
Reactivity:	Mouse
Host:	Rabbit
Isotype:	IgG
Clonality:	Polyclonal
Immunogen:	The immunogen for anti-Cst6 antibody: synthetic peptide directed towards the middle region of human Cst6. Synthetic peptide located within the following region: CGELIPPPPSYRLSLTLTSPSTAAKELVLIPLHAAPNQAVAEIDALYD
Formulation:	Liquid. Purified antibody supplied in 1x PBS buffer with 0.09% (w/v) sodium azide and 2% sucrose. <i>Note that this product is shipped as lyophilized powder to China customers.</i>
Purification:	Affinity Purified
Conjugation:	Unconjugated
Storage:	Store at -20°C as received.
Stability:	Stable for 12 months from date of receipt.
Predicted Protein Size:	16 kDa
Gene Name:	cystatin E/M
Database Link:	<a href="#">NP_082899</a> <a href="#">Entrez Gene 73720 Mouse</a>
Background:	The function of Cst6 remains unknown.
Synonyms:	Cystatin-6; Cystatin-E
Note:	Immunogen Sequence Homology: Human: 100%; Rat: 93%; Pig: 86%; Rabbit: 86%; Guinea pig: 86%; Mouse: 79%; Bovine: 79%



[View online »](#)

## Product images:



WB Suggested Anti-Cst6 Antibody Titration: 0.2-1 ug/ml; ELISA Titer: 1: 312500; Positive Control: Mouse Spleen