

Product datasheet for **TA337638**

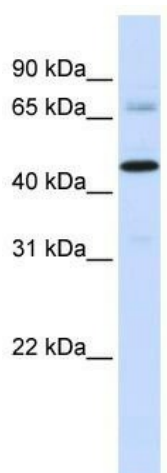
SFXN4 Rabbit Polyclonal Antibody

Product data:

| | |
|-------------------------|--|
| Product Type: | Primary Antibodies |
| Applications: | WB |
| Recommended Dilution: | WB |
| Reactivity: | Human |
| Host: | Rabbit |
| Isotype: | IgG |
| Clonality: | Polyclonal |
| Immunogen: | The immunogen for anti-SFXN4 antibody: synthetic peptide directed towards the C terminal of human SFXN4. Synthetic peptide located within the following region: SCTVLAMGLMVPFSFSIFPQIQYCSLEEKIQSPTEETEIFYHRGV |
| Formulation: | Liquid. Purified antibody supplied in 1x PBS buffer with 0.09% (w/v) sodium azide and 2% sucrose. <i>Note that this product is shipped as lyophilized powder to China customers.</i> |
| Purification: | Affinity Purified |
| Conjugation: | Unconjugated |
| Storage: | Store at -20°C as received. |
| Stability: | Stable for 12 months from date of receipt. |
| Predicted Protein Size: | 38 kDa |
| Gene Name: | sideroflexin 4 |
| Database Link: | NP_998814 Entrez Gene 119559 Human Q6P4A7 |
| Background: | SFXN4 is a multi-pass membrane protein. It belongs to the sideroflexin family. SFXN4 is a potential iron transporter. |
| Synonyms: | BCRM1; COXPD18 |
| Note: | Immunogen Sequence Homology: Human: 100%; Pig: 85%; Mouse: 85%; Rabbit: 77% |
| Protein Families: | Transmembrane |



[View online »](#)

Product images:

WB Suggested Anti-SFXN4 Antibody Titration: 0.2-1 ug/ml; ELISA Titer: 1: 1562500; Positive Control: MCF7 cell lysate