

Product datasheet for **TA337637**

SFXN4 Rabbit Polyclonal Antibody

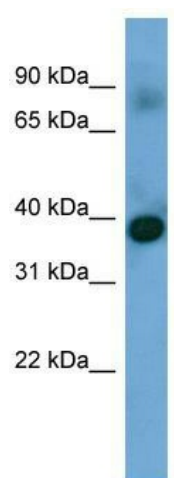
Product data:

Product Type:	Primary Antibodies
Applications:	WB
Recommended Dilution:	WB
Reactivity:	Human
Host:	Rabbit
Isotype:	IgG
Clonality:	Polyclonal
Immunogen:	The immunogen for anti-SFXN4 antibody: synthetic peptide directed towards the N terminal of human SFXN4. Synthetic peptide located within the following region: MSLEQEEETQPGRLLGRRDAVPAFIEPNVRFWITERQSFIRRFLLQWTELL
Formulation:	Liquid. Purified antibody supplied in 1x PBS buffer with 0.09% (w/v) sodium azide and 2% sucrose.
Purification:	Affinity Purified
Conjugation:	Unconjugated
Storage:	Store at -20°C as received.
Stability:	Stable for 12 months from date of receipt.
Predicted Protein Size:	38 kDa
Gene Name:	sideroflexin 4
Database Link:	NP_998814 Entrez Gene 119559 Human Q6P4A7
Background:	SFXN4 is a multi-pass membrane protein. It belongs to the sideroflexin family. SFXN4 is a potential iron transporter.
Synonyms:	BCRM1; COXPD18
Note:	Immunogen Sequence Homology: Human: 100%
Protein Families:	Transmembrane



[View online »](#)

Product images:



WB Suggested Anti-SFXN4 Antibody Titration: 0.2-1 ug/ml; ELISA Titer: 1: 62500; Positive Control: Transfected 293T