

Product datasheet for TA337636

C20orf132 (MROH8) Rabbit Polyclonal Antibody

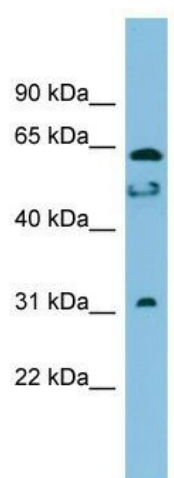
Product data:

Product Type:	Primary Antibodies
Applications:	WB
Recommended Dilution:	WB
Reactivity:	Human
Host:	Rabbit
Isotype:	IgG
Clonality:	Polyclonal
Immunogen:	The immunogen for anti-MROH8 antibody: synthetic peptide directed towards the middle region of human MROH8. Synthetic peptide located within the following region: PHLENLDTIIKPLRFQRLGHLVALMALLCGDPQEKVAEEAAEGIHSLH
Formulation:	Liquid. Purified antibody supplied in 1x PBS buffer with 0.09% (w/v) sodium azide and 2% sucrose. <i>Note that this product is shipped as lyophilized powder to China customers.</i>
Purification:	Affinity Purified
Conjugation:	Unconjugated
Storage:	Store at -20°C as received.
Stability:	Stable for 12 months from date of receipt.
Predicted Protein Size:	63 kDa
Gene Name:	maestro heat like repeat family member 8
Database Link:	NP_998797 Entrez Gene 140699 Human Q9H579
Background:	The function of this protein remains unknown.
Synonyms:	C20orf131; C20orf132; dj621N11.3; dj621N11.4
Note:	Immunogen Sequence Homology: Human: 100%; Mouse: 85%



[View online »](#)

Product images:



WB Suggested Anti-MROH8 Antibody Titration:
0.2-1 ug/ml; ELISA Titer: 1: 312500; Positive
Control: Jurkat cell lysate