

Product datasheet for **TA337631**

OSCP1 Rabbit Polyclonal Antibody

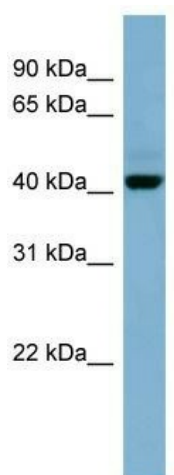
Product data:

| | |
|-------------------------|--|
| Product Type: | Primary Antibodies |
| Applications: | WB |
| Recommended Dilution: | WB |
| Reactivity: | Human |
| Host: | Rabbit |
| Isotype: | IgG |
| Clonality: | Polyclonal |
| Immunogen: | The immunogen for anti-OSCP1 antibody: synthetic peptide directed towards the N terminal of human OSCP1. Synthetic peptide located within the following region: MSVRTLP LLFLNLGGEMLYILDQRLRAQNIPGDKARKDEWTEVDRKRVLN |
| Formulation: | Liquid. Purified antibody supplied in 1x PBS buffer with 0.09% (w/v) sodium azide and 2% sucrose. <i>Note that this product is shipped as lyophilized powder to China customers.</i> |
| Purification: | Affinity Purified |
| Conjugation: | Unconjugated |
| Storage: | Store at -20°C as received. |
| Stability: | Stable for 12 months from date of receipt. |
| Predicted Protein Size: | 43 kDa |
| Gene Name: | organic solute carrier partner 1 |
| Database Link: | NP_659484 Entrez Gene 127700 Human Q8WVF1 |
| Background: | The function of this protein remains unknown. |
| Synonyms: | C1orf102; NOR1 |
| Note: | Immunogen Sequence Homology: Pig: 100%; Rat: 100%; Human: 100%; Mouse: 100%; Bovine: 100%; Rabbit: 100%; Guinea pig: 100%; Horse: 93%; Zebrafish: 93% |



[View online »](#)

Product images:



WB Suggested Anti-OSCP1 Antibody Titration: 0.2-1 ug/ml; ELISA Titer: 1: 312500; Positive Control: NCI-H226 cell lysate