

Product datasheet for **TA337630**

AKR1C2 Rabbit Polyclonal Antibody

Product data:

Product Type:	Primary Antibodies
Applications:	WB
Recommended Dilution:	WB
Reactivity:	Human
Host:	Rabbit
Isotype:	IgG
Clonality:	Polyclonal
Immunogen:	The immunogen for anti-AKR1C2 antibody: synthetic peptide directed towards the N terminal of human AKR1C2. Synthetic peptide located within the following region: DGSVKREDIFYTSKLWSNSHRPELVRPALERSLKNLQLDYVDLYLIHFPV
Formulation:	Liquid. Purified antibody supplied in 1x PBS buffer with 0.09% (w/v) sodium azide and 2% sucrose. <i>Note that this product is shipped as lyophilized powder to China customers.</i>
Purification:	Affinity Purified
Conjugation:	Unconjugated
Storage:	Store at -20°C as received.
Stability:	Stable for 12 months from date of receipt.
Predicted Protein Size:	37 kDa
Gene Name:	aldo-keto reductase family 1, member C2
Database Link:	NP_995317 Entrez Gene 1646 Human P52895



[View online »](#)

Background: This gene encodes a member of the aldo/keto reductase superfamily, which consists of more than 40 known enzymes and proteins. These enzymes catalyze the conversion of aldehydes and ketones to their corresponding alcohols using NADH and/or NADPH as cofactors. The enzymes display overlapping but distinct substrate specificity. This enzyme binds bile acid with high affinity, and shows minimal 3-alpha-hydroxysteroid dehydrogenase activity. This gene shares high sequence identity with three other gene members and is clustered with those three genes at chromosome 10p15-p14.

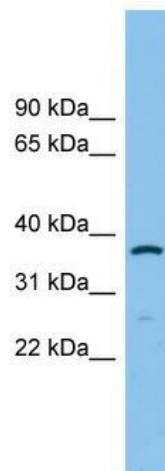
Synonyms: AKR1C-pseudo; BABP; DD; DD-2; DD2; DDH2; HAKRD; HBAB; MCDR2; SRXY8; TDD

Note: Immunogen Sequence Homology: Pig: 100%; Horse: 100%; Human: 100%; Bovine: 100%; Rabbit: 91%; Rat: 90%; Mouse: 90%

Protein Families: Druggable Genome

Protein Pathways: Metabolism of xenobiotics by cytochrome P450

Product images:



WB Suggested Anti-AKR1C2 Antibody Titration:
0.2-1 ug/ml; ELISA Titer: 1: 312500; Positive
Control: MCF7 cell lysate