

## Product datasheet for **TA337628**

### Micos13 Rabbit Polyclonal Antibody

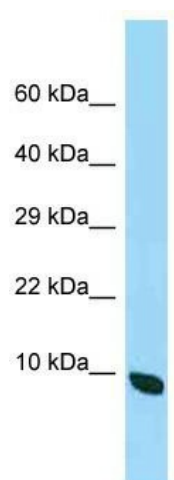
#### Product data:

|                         |  |
|-------------------------|--|
| Product Type:           | Primary Antibodies   |
| Applications:           | WB   |
| Recommended Dilution:   | WB   |
| Reactivity:             | Mouse  |
| Host:                   | Rabbit   |
| Isotype:                | IgG  |
| Clonality:              | Polyclonal   |
| Immunogen:              | The immunogen for Anti-2410015M20Rik antibody is: synthetic peptide directed towards the C-terminal region of 2410015M20Rik. Synthetic peptide located within the following region: TGLEMPQLPTPPKIKFPNFRDSWNSGIISVMSALSVPASKAREYSKEGWE |
| Formulation:            | Liquid. Purified antibody supplied in 1x PBS buffer with 0.09% (w/v) sodium azide and 2% sucrose.  |
| Purification:           | Affinity Purified  |
| Conjugation:            | Unconjugated   |
| Storage:                | Store at -20°C as received.  |
| Stability:              | Stable for 12 months from date of receipt.   |
| Predicted Protein Size: | 13 kDa   |
| Gene Name:              | RIKEN cDNA 2410015M20 gene   |
| Database Link:          | <a href="#">NP_694792</a><br><a href="#">Entrez Gene 224904 Mouse</a><br><a href="#">Q8R404</a>  |
| Background:             | The function of this protein remains unknown.  |
| Synonyms:               | QIL1   |
| Note:                   | Immunogen Sequence Homology: Pig: 100%; Human: 100%; Mouse: 100%; Horse: 93%; Dog: 86%; Bovine: 86%; Guinea pig: 86%; Rat: 79%   |



[View online »](#)

## Product images:



WB Suggested Anti-2410015M20Rik Antibody;  
Titration: 1.0 ug/ml; Positive Control: Mouse  
Small Intestine