

Product datasheet for **TA337626**

FITM1 Rabbit Polyclonal Antibody

Product data:

Product Type:	Primary Antibodies
Applications:	WB
Recommended Dilution:	WB
Reactivity:	Human
Host:	Rabbit
Isotype:	IgG
Clonality:	Polyclonal
Immunogen:	The immunogen for anti-FITM1 antibody: synthetic peptide directed towards the middle region of human LOC161247. Synthetic peptide located within the following region: YFHQYTHKVVGA AVGTF AWYLT YG SWYHQP WSPGSPGHGLFPRPHSSRKH
Formulation:	Liquid. Purified antibody supplied in 1x PBS buffer with 0.09% (w/v) sodium azide and 2% sucrose. <i>Note that this product is shipped as lyophilized powder to China customers.</i>
Purification:	Affinity Purified
Conjugation:	Unconjugated
Storage:	Store at -20°C as received.
Stability:	Stable for 12 months from date of receipt.
Predicted Protein Size:	32 kDa
Gene Name:	fat storage inducing transmembrane protein 1
Database Link:	NP_981947 Entrez Gene 161247 Human A5D6W6
Background:	The specific function of this protein remains unknown. FIT1 belongs to an evolutionarily conserved family of proteins involved in fat storage (Kadereit et al., 2008 [PubMed 18160536]). [supplied by OMIM]. PRIMARYREFSEQ_SPAN PRIMARY_IDENTIFIER PRIMARY_SPAN COMP 1-94 BX347190.2 448-541 c 95-825 BI114004.1 1-731 826-928 BQ574746.1 1-103 c
Synonyms:	FIT1

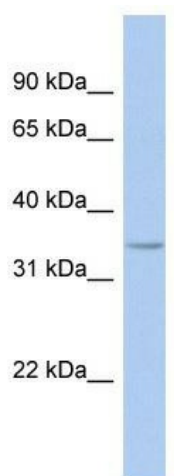


[View online »](#)

Note: Immunogen Sequence Homology: Dog: 100%; Human: 100%; Bovine: 100%; Rat: 93%; Rabbit: 93%; Pig: 86%; Guinea pig: 86%; Mouse: 79%

Protein Families: Transmembrane

Product images:



WB Suggested Anti-FITM1 Antibody Titration: 0.2-1 ug/ml; ELISA Titer: 1: 62500; Positive Control: 721_B cell lysate