

Product datasheet for **TA337625**

FITM1 Rabbit Polyclonal Antibody

Product data:

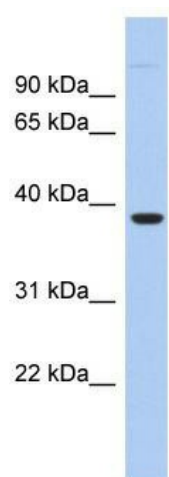
Product Type:	Primary Antibodies
Applications:	WB
Recommended Dilution:	WB
Reactivity:	Human
Host:	Rabbit
Isotype:	IgG
Clonality:	Polyclonal
Immunogen:	Synthetic peptide directed towards the N terminal of human FITM1. Synthetic peptide located within the following region: MERGPVVGAGLGAGARIQALLGCLKVLLWVASALLYFGSEQAARLLGSP
Formulation:	Liquid. Purified antibody supplied in 1x PBS buffer with 0.09% (w/v) sodium azide and 2% sucrose.
Purification:	Affinity Purified
Conjugation:	Unconjugated
Storage:	Store at -20°C as received.
Stability:	Stable for 12 months from date of receipt.
Predicted Protein Size:	32 kDa
Gene Name:	fat storage inducing transmembrane protein 1
Database Link:	NP_981947 Entrez Gene 161247 Human A5D6W6
Background:	The specific function of this protein remains unknown. FIT1 belongs to an evolutionarily conserved family of proteins involved in fat storage (Kadereit et al., 2008 [PubMed 18160536]). [supplied by OMIM]. PRIMARYREFSEQ_SPAN PRIMARY_IDENTIFIER PRIMARY_SPAN COMP 1-94 BX347190.2 448-541 c 95-825 BI114004.1 1-731 826-928 BQ574746.1 1-103 c
Synonyms:	FIT1
Note:	Immunogen Sequence Homology: Pig: 100%; Human: 100%; Dog: 93%; Bovine: 93%; Mouse: 92%; Rabbit: 92%; Rat: 86%; Horse: 86%; Guinea pig: 86%



[View online »](#)

Protein Families: Transmembrane

Product images:



LOC161247 Antibody (against the N terminal of LOC161247) (50ug) validated by WB using Fetal liver cell lysate at 0.2-1 ug/ml.