

Product datasheet for **TA337624**

CHCHD1 Rabbit Polyclonal Antibody

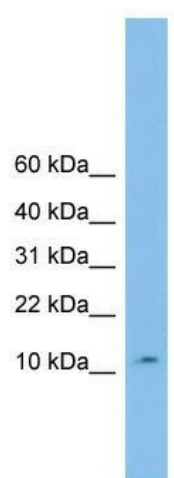
Product data:

Product Type:	Primary Antibodies
Applications:	WB
Recommended Dilution:	WB
Reactivity:	Human
Host:	Rabbit
Isotype:	IgG
Clonality:	Polyclonal
Immunogen:	The immunogen for anti-CHCHD1 antibody: synthetic peptide directed towards the middle region of human CHCHD1. Synthetic peptide located within the following region: KEIQGFLDCAARAQEARQMRSIQETLGESGSLLPNKLNLKLLQRFNKPYL
Formulation:	Liquid. Purified antibody supplied in 1x PBS buffer with 0.09% (w/v) sodium azide and 2% sucrose. <i>Note that this product is shipped as lyophilized powder to China customers.</i>
Purification:	Affinity Purified
Conjugation:	Unconjugated
Storage:	Store at -20°C as received.
Stability:	Stable for 12 months from date of receipt.
Predicted Protein Size:	13 kDa
Gene Name:	coiled-coil-helix-coiled-coil-helix domain containing 1
Database Link:	NP_976043 Entrez Gene 118487 Human Q96BP2
Background:	The function of this protein remains unknown.
Synonyms:	C10orf34; C2360; MRP-S37
Note:	Immunogen Sequence Homology: Pig: 100%; Human: 100%; Guinea pig: 100%; Rat: 93%; Bovine: 93%; Dog: 90%; Goat: 86%; Horse: 86%; Mouse: 83%



[View online »](#)

Product images:



WB Suggested Anti-CHCHD1 Antibody Titration:
0.2-1 ug/ml; ELISA Titer: 1: 62500; Positive
Control: U937 cell lysate