

## Product datasheet for **TA337622**

### Repulsive Guidance Molecule C (HFE2) Rabbit Polyclonal Antibody

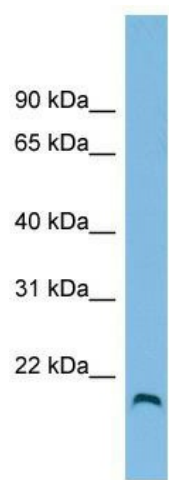
#### Product data:

Product Type:	Primary Antibodies
Applications:	WB
Recommended Dilution:	WB
Reactivity:	Human
Host:	Rabbit
Isotype:	IgG
Clonality:	Polyclonal
Immunogen:	The immunogen for anti-HFE2 antibody: synthetic peptide directed towards the N terminal of human HFE2. Synthetic peptide located within the following region: SSLSIQTANPGNHVEIQAAAYIGTTIIIRQTAGQLSFSIKVAEDVAMAFSA
Formulation:	Liquid. Purified antibody supplied in 1x PBS buffer with 0.09% (w/v) sodium azide and 2% sucrose. <i>Note that this product is shipped as lyophilized powder to China customers.</i>
Purification:	Affinity Purified
Conjugation:	Unconjugated
Storage:	Store at -20°C as received.
Stability:	Stable for 12 months from date of receipt.
Predicted Protein Size:	21 kDa
Gene Name:	hemochromatosis type 2 (juvenile)
Database Link:	<a href="#">NP_973733</a> <a href="#">Entrez Gene 148738 Human</a> <a href="#">Q6ZVN8</a>



[View online »](#)

<b>Background:</b>	The product of this gene is involved in iron metabolism. It may be a component of the signaling pathway which activates hepcidin or it may act as a modulator of hepcidin expression. It could also represent the cellular receptor for hepcidin. Alternatively spliced transcript variants encoding different isoforms have been identified for this gene. Defects in this gene are the cause of hemochromatosis type 2A, also called juvenile hemochromatosis (JH). JH is an early-onset autosomal recessive disorder due to severe iron overload resulting in hypogonadotrophic hypogonadism, hepatic fibrosis or cirrhosis and cardiomyopathy, occurring typically before age of 30.
<b>Synonyms:</b>	HFE2A; HJV; JH; RGMC
<b>Note:</b>	Immunogen Sequence Homology: Human: 100%; Mouse: 100%; Bovine: 100%; Rabbit: 100%; Dog: 93%; Pig: 93%; Rat: 93%; Guinea pig: 93%
<b>Protein Families:</b>	Transmembrane

**Product images:**

WB Suggested Anti-HFE2 Antibody Titration: 0.2-1 ug/ml; ELISA Titer: 1: 62500; Positive Control: HT1080 cell lysate