

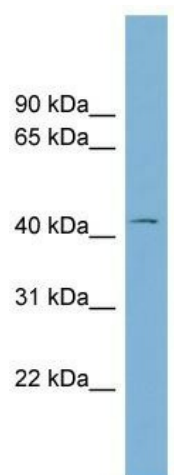
## Product datasheet for TA337621

### LRRC23 Rabbit Polyclonal Antibody

#### Product data:

Product Type:	Primary Antibodies
Applications:	WB
Recommended Dilution:	WB
Reactivity:	Human
Host:	Rabbit
Isotype:	IgG
Clonality:	Polyclonal
Immunogen:	The immunogen for anti-LRRC23 antibody: synthetic peptide directed towards the middle region of human LRRC23. Synthetic peptide located within the following region: ISLHTVELRGNQLESTLGINLPKLKNLYLAQNMLKKVEGLEDSLNLTLH
Formulation:	Liquid. Purified antibody supplied in 1x PBS buffer with 0.09% (w/v) sodium azide and 2% sucrose.
Purification:	Affinity Purified
Conjugation:	Unconjugated
Storage:	Store at -20°C as received.
Stability:	Stable for 12 months from date of receipt.
Predicted Protein Size:	40 kDa
Gene Name:	leucine rich repeat containing 23
Database Link:	<a href="#">NP_964013</a> <a href="#">Entrez Gene 10233 Human</a> <a href="#">Q53EV4</a>
Background:	LRRC23 contains 5 LRR (leucine-rich) repeats. The exact function of LRRC23 remains unknown.
Synonyms:	LRPB7
Note:	Immunogen Sequence Homology: Dog: 100%; Human: 100%; Pig: 93%; Bovine: 93%; Rabbit: 93%; Mouse: 92%; Horse: 86%; Rat: 79%


[View online »](#)

**Product images:**


WB Suggested Anti-LRRC23 Antibody Titration:  
 0.2-1 ug/ml; ELISA Titer: 1: 1562500; Positive  
 Control: NCI-H226 cell lysate LRRC23 is strongly  
 supported by BioGPS gene expression data to be  
 expressed in NCI-H226