

Product datasheet for **TA337619**

DGKA Rabbit Polyclonal Antibody

Product data:

Product Type:	Primary Antibodies
Applications:	WB
Recommended Dilution:	WB
Reactivity:	Human
Host:	Rabbit
Isotype:	IgG
Clonality:	Polyclonal
Immunogen:	The immunogen for anti-DGKA antibody: synthetic peptide directed towards the N terminal of human DGKA. Synthetic peptide located within the following region: EGGRPDKLEFTFKLYDTRNGILDSEVDKILQMMRVAEYLDWDVSEL
Formulation:	Liquid. Purified antibody supplied in 1x PBS buffer with 0.09% (w/v) sodium azide and 2% sucrose. <i>Note that this product is shipped as lyophilized powder to China customers.</i>
Purification:	Affinity Purified
Conjugation:	Unconjugated
Storage:	Store at -20°C as received.
Stability:	Stable for 12 months from date of receipt.
Predicted Protein Size:	83 kDa
Gene Name:	diacylglycerol kinase alpha
Database Link:	NP_963848 Entrez Gene 1606 Human P23743
Background:	The protein encoded by this gene belongs to the eukaryotic diacylglycerol kinase family. It acts as a modulator that competes with protein kinase C for the second messenger diacylglycerol in intracellular signaling pathways. It also plays an important role
Synonyms:	DAGK; DAGK1; DGK-alpha
Note:	Immunogen Sequence Homology: Dog: 100%; Pig: 100%; Horse: 100%; Human: 100%; Bovine: 100%; Rat: 93%; Rabbit: 93%; Guinea pig: 93%; Mouse: 85%; Zebrafish: 79%

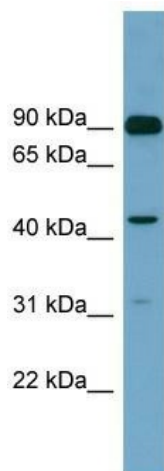


[View online »](#)

Protein Families: Druggable Genome

Protein Pathways: Glycerolipid metabolism, Glycerophospholipid metabolism, Metabolic pathways, Phosphatidylinositol signaling system

Product images:



WB Suggested Anti-DGKA Antibody Titration: 0.2-1 ug/ml; ELISA Titer: 1: 312500; Positive Control: Human heart