

Product datasheet for **TA337617**

ZBPB2 Rabbit Polyclonal Antibody

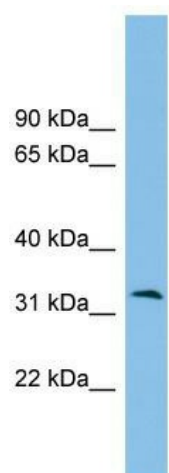
Product data:

Product Type:	Primary Antibodies
Applications:	WB
Recommended Dilution:	WB
Reactivity:	Human
Host:	Rabbit
Isotype:	IgG
Clonality:	Polyclonal
Immunogen:	The immunogen for anti-ZBPB2 antibody: synthetic peptide directed towards the middle region of human ZBPB2. Synthetic peptide located within the following region: VRLDSCRPGFGKNERLHSNCASCCVWCSPATFSPDVNVTCQTCVSVLTYG
Formulation:	Liquid. Purified antibody supplied in 1x PBS buffer with 0.09% (w/v) sodium azide and 2% sucrose. <i>Note that this product is shipped as lyophilized powder to China customers.</i>
Purification:	Affinity Purified
Conjugation:	Unconjugated
Storage:	Store at -20°C as received.
Stability:	Stable for 12 months from date of receipt.
Predicted Protein Size:	35 kDa
Gene Name:	zona pellucida binding protein 2
Database Link:	NP_942141 Entrez Gene 124626 Human Q6X784
Background:	ZBPB2 may be implicated in gamete interaction during fertilization.
Synonyms:	ZPBPL
Note:	Immunogen Sequence Homology: Human: 100%; Pig: 92%; Rat: 92%; Horse: 92%; Mouse: 92%; Rabbit: 92%; Guinea pig: 92%
Protein Families:	Secreted Protein



[View online »](#)

Product images:



WB Suggested Anti-ZBP2 Antibody Titration: 0.2-1 ug/ml; ELISA Titer: 1: 312500; Positive Control: Hela cell lysate