

Product datasheet for **TA337614**

ATPCKMT Rabbit Polyclonal Antibody

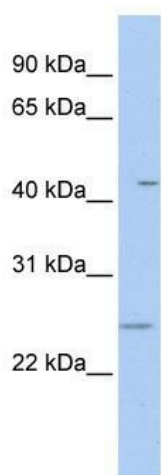
Product data:

Product Type:	Primary Antibodies
Applications:	WB
Recommended Dilution:	WB
Reactivity:	Human
Host:	Rabbit
Isotype:	IgG
Clonality:	Polyclonal
Immunogen:	The immunogen for anti-FAM173B antibody: synthetic peptide directed towards the N terminal of human LOC134145. Synthetic peptide located within the following region: EGGGGIPLKTLKEESQSRHVLPA SFEVNSLQKSNWGFLLTGLVGGTLVAV
Formulation:	Liquid. Purified antibody supplied in 1x PBS buffer with 0.09% (w/v) sodium azide and 2% sucrose.
Purification:	Affinity Purified
Conjugation:	Unconjugated
Storage:	Store at -20°C as received.
Stability:	Stable for 12 months from date of receipt.
Predicted Protein Size:	26 kDa
Gene Name:	family with sequence similarity 173 member B
Database Link:	NP_954584 Entrez Gene 134145 Human Q6P4H8
Background:	The exact function of LOC134145 remains unknown.
Synonyms:	JS-2
Note:	Immunogen Sequence Homology: Human: 100%
Protein Families:	Druggable Genome, Transmembrane



[View online »](#)

Product images:



WB Suggested Anti-FAM173B Antibody Titration:
0.2-1 ug/ml; Positive Control: Human Lung