

Product datasheet for TA337612

C1orf122 Rabbit Polyclonal Antibody

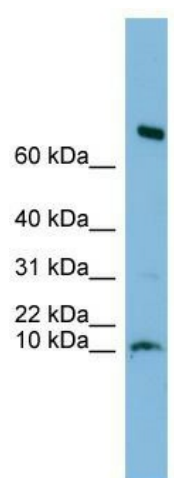
Product data:

Product Type:	Primary Antibodies
Applications:	WB
Recommended Dilution:	WB
Reactivity:	Human
Host:	Rabbit
Isotype:	IgG
Clonality:	Polyclonal
Immunogen:	The immunogen for anti-C1orf122 antibody: synthetic peptide directed towards the n terminal of human C1orf122. Synthetic peptide located within the following region: GAGARREATPTAAPGGARQAAAGRGGAAAAAAPGHHRSLRGDVTAAAGPPA
Formulation:	Liquid. Purified antibody supplied in 1x PBS buffer with 0.09% (w/v) sodium azide and 2% sucrose. <i>Note that this product is shipped as lyophilized powder to China customers.</i>
Purification:	Affinity Purified
Conjugation:	Unconjugated
Storage:	Store at -20°C as received.
Stability:	Stable for 12 months from date of receipt.
Predicted Protein Size:	16 kDa
Gene Name:	chromosome 1 open reading frame 122
Database Link:	NP_001136198 Entrez Gene 127687 Human Q6ZSJ8
Background:	The function of this protein remains unknown.
Synonyms:	ALAESM
Note:	Immunogen Sequence Homology:



[View online »](#)

Product images:



WB Suggested Anti-C1orf122 Antibody Titration:
0.2-1 ug/ml; ELISA Titer: 1: 1562500; Positive
Control: Human heart