

## Product datasheet for **TA337608**

### ABHD15 Rabbit Polyclonal Antibody

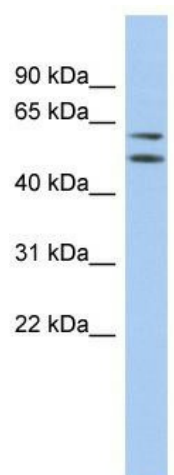
#### Product data:

|                         |  |
|-------------------------|--|
| Product Type:           | Primary Antibodies   |
| Applications:           | WB   |
| Recommended Dilution:   | WB   |
| Reactivity:             | Human  |
| Host:                   | Rabbit   |
| Isotype:                | IgG  |
| Clonality:              | Polyclonal   |
| Immunogen:              | The immunogen for anti-ABHD15 antibody: synthetic peptide directed towards the N terminal of human LOC116236. Synthetic peptide located within the following region:<br>QTLCHFVLPVAPGPELAREYLQLADDGLVALDWVVGPCVRGRRITSAGGL |
| Formulation:            | Liquid. Purified antibody supplied in 1x PBS buffer with 0.09% (w/v) sodium azide and 2% sucrose.<br><i>Note that this product is shipped as lyophilized powder to China customers.</i>                                    |
| Purification:           | Affinity Purified  |
| Conjugation:            | Unconjugated   |
| Storage:                | Store at -20°C as received.  |
| Stability:              | Stable for 12 months from date of receipt.   |
| Predicted Protein Size: | 52 kDa   |
| Gene Name:              | abhydrolase domain containing 15   |
| Database Link:          | <a href="#">NP_937790</a><br><a href="#">Entrez Gene 116236 Human</a><br><a href="#">Q6UXT9</a>  |
| Background:             | The specific function of this protein remains unknown.   |
| Synonyms:               | ABHD15   |
| Note:                   | Immunogen Sequence Homology: Dog: 100%; Pig: 100%; Rat: 100%; Horse: 100%; Human: 100%; Mouse: 100%; Bovine: 100%; Rabbit: 100%; Guinea pig: 100%  |
| Protein Families:       | Transmembrane  |



[View online »](#)

## Product images:



WB Suggested Anti-ABHD15 Antibody Titration:  
0.2-1 ug/ml; ELISA Titer: 1: 312500; Positive  
Control: 721\_B cell lysate