

## Product datasheet for **TA337607**

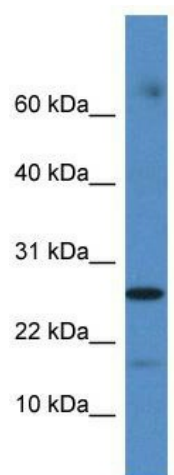
### FAM36A (COX20) Rabbit Polyclonal Antibody

#### Product data:

Product Type:	Primary Antibodies
Applications:	WB
Recommended Dilution:	WB
Reactivity:	Human
Host:	Rabbit
Isotype:	IgG
Clonality:	Polyclonal
Immunogen:	The immunogen for anti-COX20 antibody: synthetic peptide directed towards the C terminal of human COX20. Synthetic peptide located within the following region: LGCWFHCRYNYAKQRIQERIAREEIKKILYEGTHLDPERKHNGSSSN
Formulation:	Liquid. Purified antibody supplied in 1x PBS buffer with 0.09% (w/v) sodium azide and 2% sucrose. <i>Note that this product is shipped as lyophilized powder to China customers.</i>
Purification:	Affinity Purified
Conjugation:	Unconjugated
Storage:	Store at -20°C as received.
Stability:	Stable for 12 months from date of receipt.
Predicted Protein Size:	13 kDa
Gene Name:	COX20 cytochrome c oxidase assembly factor
Database Link:	<a href="#">NP_932342</a> <a href="#">Entrez Gene 116228 Human Q5RI15</a>
Background:	COX20 is a multi-pass membrane protein. It belongs to the FAM36 family. The exact function of COX20 remains unknown.
Synonyms:	FAM36A
Note:	Immunogen Sequence Homology: Human: 100%; Rat: 90%; Mouse: 90%; Horse: 79%; Rabbit: 79%



[View online »](#)

**Product images:**

WB Suggested Anti-COX20 Antibody Titration: 0.2-1 ug/ml; ELISA Titer: 1: 62500; Positive Control: Human Muscle