

## Product datasheet for **TA337606**

### LRRC56 Rabbit Polyclonal Antibody

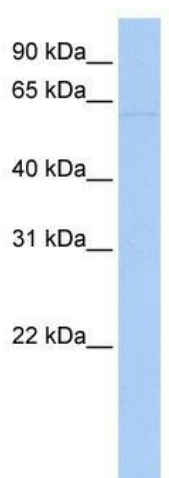
#### Product data:

|                         |   |
|-------------------------|---|
| Product Type:           | Primary Antibodies  |
| Applications:           | WB  |
| Recommended Dilution:   | WB  |
| Reactivity:             | Human   |
| Host:                   | Rabbit  |
| Isotype:                | IgG   |
| Clonality:              | Polyclonal  |
| Immunogen:              | The immunogen for anti-LRRC56 antibody: synthetic peptide directed towards the N terminal of human LRRC56. Synthetic peptide located within the following region:<br>LEMCVDTREGLGNFGVHLPNLDQLKLNGLSHLGRDLGTSLGHLQVLWL |
| Formulation:            | Liquid. Purified antibody supplied in 1x PBS buffer with 0.09% (w/v) sodium azide and 2% sucrose.   |
| Purification:           | Affinity Purified   |
| Conjugation:            | Unconjugated  |
| Storage:                | Store at -20°C as received.   |
| Stability:              | Stable for 12 months from date of receipt.  |
| Predicted Protein Size: | 59 kDa  |
| Gene Name:              | leucine rich repeat containing 56   |
| Database Link:          | <a href="#">NP_932341</a><br><a href="#">Entrez Gene 115399 Human</a><br><a href="#">Q8IYG6</a>   |
| Background:             | LRRC56 contains 3 LRR (leucine-rich) repeats. The exact function of LRRC56 remains unknown.   |
| Synonyms:               | DKFzP761L1518; FLJ00101   |
| Note:                   | Immunogen Sequence Homology: Rat: 100%; Human: 100%; Mouse: 100%; Bovine: 93%; Pig: 92%; Guinea pig: 92%; Dog: 86%; Horse: 86%; Zebrafish: 85%  |



[View online »](#)

**Product images:**



WB Suggested Anti-LRRC56 Antibody Titration:  
0.2-1 ug/ml; Positive Control: Human Liver