

Product datasheet for **TA337605**

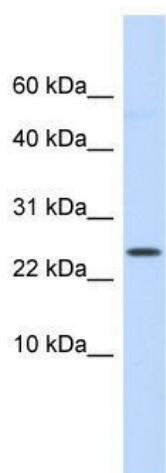
LYPD6 Rabbit Polyclonal Antibody

Product data:

Product Type:	Primary Antibodies
Applications:	WB
Recommended Dilution:	WB
Reactivity:	Human
Host:	Rabbit
Isotype:	IgG
Clonality:	Polyclonal
Immunogen:	The immunogen for anti-LYPD6 antibody: synthetic peptide directed towards the middle region of human LYPD6. Synthetic peptide located within the following region: RDSEHEGHKVCTSCCEGNICNLPLPRNETDATFATTSPINQTNGHPRCMS
Formulation:	Liquid. Purified antibody supplied in 1x PBS buffer with 0.09% (w/v) sodium azide and 2% sucrose.
Purification:	Affinity Purified
Conjugation:	Unconjugated
Storage:	Store at -20°C as received.
Stability:	Stable for 12 months from date of receipt.
Predicted Protein Size:	19 kDa
Gene Name:	LY6/PLAUR domain containing 6
Database Link:	NP_919298 Entrez Gene 130574 Human Q86Y78
Background:	LYPD6 contains 1 UPAR/Ly6 domain. The exact function of LYPD6 is not known.
Synonyms:	MGC52057
Note:	Immunogen Sequence Homology: Dog: 100%; Pig: 100%; Rat: 100%; Horse: 100%; Human: 100%; Mouse: 100%; Bovine: 100%; Rabbit: 100%; Guinea pig: 93%
Protein Families:	Secreted Protein



[View online »](#)

Product images:

WB Suggested Anti-LYPD6 Antibody Titration: 0.2-1 ug/ml; ELISA Titer: 1: 312500; Positive Control: Human Small Intestine