

Product datasheet for **TA337604**

HBLD1 (ISCA2) Rabbit Polyclonal Antibody

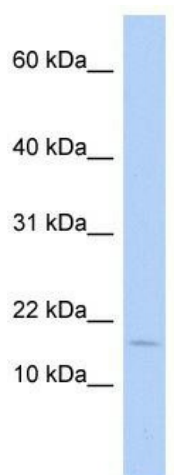
Product data:

| | |
|-------------------------|---|
| Product Type: | Primary Antibodies |
| Applications: | WB |
| Recommended Dilution: | WB |
| Reactivity: | Human |
| Host: | Rabbit |
| Isotype: | IgG |
| Clonality: | Polyclonal |
| Immunogen: | The immunogen for anti-ISCA2 antibody: synthetic peptide directed towards the middle region of human ISCA2. Synthetic peptide located within the following region: RREASSSSPEAGEGQIRLTDCVQRLLTEGSEFLRLQVEGGGCSGFQY |
| Formulation: | Liquid. Purified antibody supplied in 1x PBS buffer with 0.09% (w/v) sodium azide and 2% sucrose. <i>Note that this product is shipped as lyophilized powder to China customers.</i> |
| Purification: | Affinity Purified |
| Conjugation: | Unconjugated |
| Storage: | Store at -20°C as received. |
| Stability: | Stable for 12 months from date of receipt. |
| Predicted Protein Size: | 16 kDa |
| Gene Name: | iron-sulfur cluster assembly 2 |
| Database Link: | NP_919255 Entrez Gene 122961 Human Q86U28 |
| Background: | ISCA2 is involved in the assembly of mitochondrial iron-sulfur proteins. Probably involved in the binding of an intermediate of Fe/S cluster assembly. |
| Synonyms: | c14_5557; HBLD1; ISA2; MMDS4 |
| Note: | Immunogen Sequence Homology: Pig: 100%; Rat: 100%; Human: 100%; Mouse: 100%; Guinea pig: 100%; Bovine: 93%; Rabbit: 92%; Dog: 86%; Horse: 79% |



[View online »](#)

Product images:



WB Suggested Anti-ISCA2 Antibody Titration: 0.2-1 ug/ml; ELISA Titer: 1: 1562500; Positive Control: Human Thymus