

## Product datasheet for **TA337603**

### PHACTR3 Rabbit Polyclonal Antibody

#### Product data:

Product Type:	Primary Antibodies
Applications:	WB
Recommended Dilution:	WB
Reactivity:	Human
Host:	Rabbit
Isotype:	IgG
Clonality:	Polyclonal
Immunogen:	The immunogen for anti-PHACTR3 antibody: synthetic peptide directed towards the C terminal of human PHACTR3. Synthetic peptide located within the following region: IEMKLSKRLSQRPAVEELERRNILKQRNDQTEQEERREIKQRLTRKLNQR
Formulation:	Liquid. Purified antibody supplied in 1x PBS buffer with 0.09% (w/v) sodium azide and 2% sucrose.
Purification:	Affinity Purified
Conjugation:	Unconjugated
Storage:	Store at -20°C as received.
Stability:	Stable for 12 months from date of receipt.
Predicted Protein Size:	51 kDa
Gene Name:	phosphatase and actin regulator 3
Database Link:	<a href="#">NP_899069</a> <a href="#">Entrez Gene 116154 Human</a> <a href="#">Q96KR7</a>
Background:	PHACTR3 is associated with the nuclear scaffold in proliferating cells. It was found to bind to the catalytic subunit of protein phosphatase-1 (PP1) and inhibit PP1 activity, suggesting that this protein may function as a regulatory subunit of PP1. The protein encoded by this gene is associated with the nuclear scaffold in proliferating cells. It was found to bind to the catalytic subunit of protein phosphatase-1 (PP1) and inhibit PP1 activity, suggesting that this protein may function as a regulatory subunit of PP1. Alternative splicing at this locus results in several transcript variants encoding different isoforms.

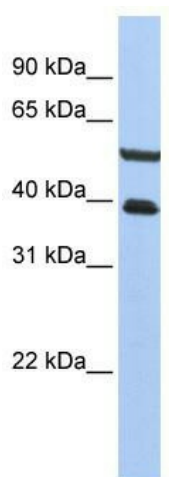


[View online »](#)

**Synonyms:** C20orf101; H17739; PPP1R123; SCAPIN1; SCAPININ

**Note:** Immunogen Sequence Homology: Dog: 100%; Pig: 100%; Rat: 100%; Horse: 100%; Human: 100%; Mouse: 100%; Bovine: 100%; Rabbit: 100%; Zebrafish: 100%; Guinea pig: 100%

**Product images:**



WB Suggested Anti-PHACTR3 Antibody Titration:  
0.2-1 ug/ml; Positive Control: HepG2 cell lysate