

Product datasheet for **TA337602**

EIF5 Rabbit Polyclonal Antibody

Product data:

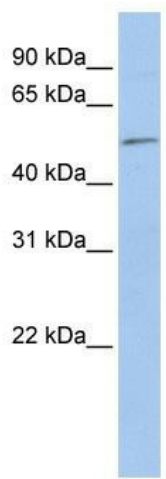
Product Type:	Primary Antibodies
Applications:	WB
Recommended Dilution:	WB
Reactivity:	Human, Mouse
Host:	Rabbit
Isotype:	IgG
Clonality:	Polyclonal
Immunogen:	The immunogen for anti-EIF5 antibody: synthetic peptide directed towards the N terminal of human EIF5. Synthetic peptide located within the following region: SVNVNRSVSDQFYRYKMPRLIAKVEGKGNIGIKTVIVNMVDVAKALNRPPT
Formulation:	Liquid. Purified antibody supplied in 1x PBS buffer with 0.09% (w/v) sodium azide and 2% sucrose. <i>Note that this product is shipped as lyophilized powder to China customers.</i>
Purification:	Affinity Purified
Conjugation:	Unconjugated
Storage:	Store at -20°C as received.
Stability:	Stable for 12 months from date of receipt.
Predicted Protein Size:	49 kDa
Gene Name:	eukaryotic translation initiation factor 5
Database Link:	NP_892116 Entrez Gene 217869 Mouse Entrez Gene 1983 Human P55010
Background:	EIF5 catalyzes the hydrolysis of GTP bound to the 40S ribosomal initiation complex (40S.mRNA.Met-tRNA[F].eIF-2.GTP) with the subsequent joining of a 60S ribosomal subunit resulting in the release of eIF-2 and the guanine nucleotide. The subsequent joining of a 60S ribosomal subunit results in the formation of a functional 80S initiation complex (80S.mRNA.Met-tRNA[F]).
Synonyms:	EIF-5; EIF-5A



[View online »](#)

Note: Immunogen Sequence Homology: Dog: 100%; Pig: 100%; Rat: 100%; Horse: 100%; Human: 100%; Mouse: 100%; Bovine: 100%; Rabbit: 100%; Zebrafish: 100%; Guinea pig: 100%

Product images:



WB Suggested Anti-EIF5 Antibody Titration: 0.2-1 ug/ml; ELISA Titer: 1: 312500; Positive Control: HeLa cell lysate There is BioGPS gene expression data showing that EIF5 is expressed in HeLa

EIF5



Rabbit Anti-EIF5
Sample Type: Human HeLa
Antibody Concentration: 1ug/mL

Host: Rabbit; Target Name: EIF5; Sample Tissue: HeLa; Antibody Dilution: 1.0 ug/ml; There is BioGPS gene expression data showing that EIF5 is expressed in HeLa