

Product datasheet for **TA337601**

XRRA1 Rabbit Polyclonal Antibody

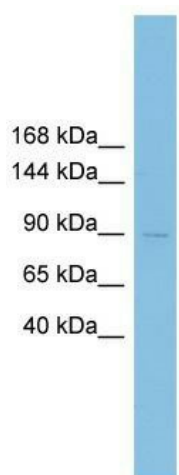
Product data:

Product Type:	Primary Antibodies
Applications:	WB
Recommended Dilution:	WB
Reactivity:	Human
Host:	Rabbit
Isotype:	IgG
Clonality:	Polyclonal
Immunogen:	The immunogen for anti-XRRA1 antibody: synthetic peptide directed towards the N terminal of human XRRA1. Synthetic peptide located within the following region: MAFSGIYKLDDGKPYLNNCFARNLLRVPEEGQGHVWLVQKGNLKKKPKG
Formulation:	Liquid. Purified antibody supplied in 1x PBS buffer with 0.09% (w/v) sodium azide and 2% sucrose. <i>Note that this product is shipped as lyophilized powder to China customers.</i>
Purification:	Affinity Purified
Conjugation:	Unconjugated
Storage:	Store at -20°C as received.
Stability:	Stable for 12 months from date of receipt.
Predicted Protein Size:	90 kDa
Gene Name:	X-ray radiation resistance associated 1
Database Link:	NP_892014 Entrez Gene 143570 Human Q6P2D8
Background:	XRRA1 may be involved in the response of cells to X-ray radiation.
Synonyms:	AI449753
Note:	Immunogen Sequence Homology: Human: 100%; Rabbit: 100%; Dog: 93%; Rat: 93%; Horse: 93%; Pig: 92%; Guinea pig: 92%; Bovine: 83%



[View online »](#)

Product images:



WB Suggested Anti-XRRRA1 Antibody Titration: 0.2-1 ug/ml; ELISA Titer: 1: 1562500; Positive Control: HepG2 cell lysate