

Product datasheet for **TA337600**

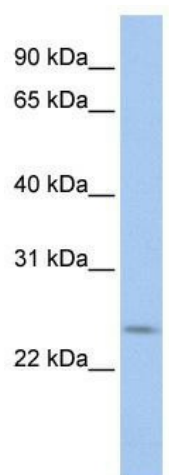
PRELID2 Rabbit Polyclonal Antibody

Product data:

Product Type:	Primary Antibodies
Applications:	WB
Recommended Dilution:	WB
Reactivity:	Human
Host:	Rabbit
Isotype:	IgG
Clonality:	Polyclonal
Immunogen:	The immunogen for anti-PRELID2 antibody: synthetic peptide directed towards the C terminal of human PRELID2. Synthetic peptide located within the following region: GRISITGVGFLNCVLETFASFLRQGAQKGRIMEMLLKEQCGAPLAE
Formulation:	Liquid. Purified antibody supplied in 1x PBS buffer with 0.09% (w/v) sodium azide and 2% sucrose.
Purification:	Affinity Purified
Conjugation:	Unconjugated
Storage:	Store at -20°C as received.
Stability:	Stable for 12 months from date of receipt.
Predicted Protein Size:	22 kDa
Gene Name:	PRELI domain containing 2
Database Link:	NP_892005 Entrez Gene 153768 Human Q8N945
Background:	PRELID2 contains 1 PRELI/MSF1 domain. The exact function of PRELID2 remains unknown.
Synonyms:	FLJ38376; MGC21644
Note:	Immunogen Sequence Homology: Dog: 100%; Pig: 100%; Rat: 100%; Horse: 100%; Human: 100%; Mouse: 100%; Rabbit: 100%; Guinea pig: 100%; Bovine: 79%



[View online »](#)

Product images:

WB Suggested Anti-PRELID2 Antibody Titration:
0.2-1 ug/ml; Positive Control: 721_B cell lysate