

Product datasheet for **TA337599**

GEFT (ARHGEF25) Rabbit Polyclonal Antibody

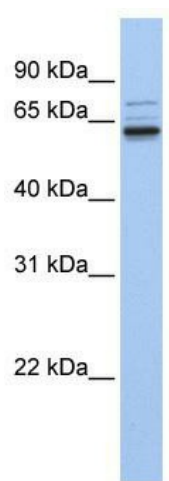
Product data:

Product Type:	Primary Antibodies
Applications:	WB
Recommended Dilution:	WB
Reactivity:	Human
Host:	Rabbit
Isotype:	IgG
Clonality:	Polyclonal
Immunogen:	The immunogen for anti-ARHGEF25 antibody: synthetic peptide directed towards the C terminal of human GEFT. Synthetic peptide located within the following region: RLGDQAQGSTHTPINGSLPSLLSPKGEVARALLPLDKQALGDIPQAPHD
Formulation:	Liquid. Purified antibody supplied in 1x PBS buffer with 0.09% (w/v) sodium azide and 2% sucrose.
Purification:	Affinity Purified
Conjugation:	Unconjugated
Storage:	Store at -20°C as received.
Stability:	Stable for 12 months from date of receipt.
Predicted Protein Size:	64 kDa
Gene Name:	Rho guanine nucleotide exchange factor 25
Database Link:	NP_891992 Entrez Gene 115557 Human Q86VW2
Background:	The Rho family of small GTPases act as molecular switches to control a wide range of cellular processes. Guanine nucleotide exchange factors (GEFs), like GEFT, activate Rho GTPases by accelerating GDP/GTP exchange. The Rho family of small GTPases act as molecular switches to control a wide range of cellular processes. Guanine nucleotide exchange factors (GEFs), like GEFT, activate Rho GTPases by accelerating GDP/GTP exchange (Souchet et al., 2002 [PubMed 11861769]). [supplied by OMIM]
Synonyms:	GEFT; p63RhoGEF


[View online »](#)

Note: Immunogen Sequence Homology: Pig: 100%; Human: 100%; Rat: 92%; Bovine: 92%; Dog: 85%; Horse: 85%; Mouse: 85%; Rabbit: 85%; Guinea pig: 85%

Product images:



WB Suggested Anti-ARHGEF25Antibody Titration:
0.2-1 ug/ml; ELISA Titer: 1: 312500; Positive
Control: Human brain