

Product datasheet for **TA337598**

EGFLAM Rabbit Polyclonal Antibody

Product data:

Product Type:	Primary Antibodies
Applications:	WB
Recommended Dilution:	WB
Reactivity:	Human
Host:	Rabbit
Isotype:	IgG
Clonality:	Polyclonal
Immunogen:	The immunogen for Anti-EGFLAM antibody is: synthetic peptide directed towards the C-terminal region of Human EGFLAM. Synthetic peptide located within the following region: TTAKDGLLLWRGDSPMRPNSTDFISLGLRDGALVFSYNLGSGVASIMVNGS
Formulation:	Liquid. Purified antibody supplied in 1x PBS buffer with 0.09% (w/v) sodium azide and 2% sucrose. <i>Note that this product is shipped as lyophilized powder to China customers.</i>
Purification:	Affinity Purified
Conjugation:	Unconjugated
Storage:	Store at -20°C as received.
Stability:	Stable for 12 months from date of receipt.
Predicted Protein Size:	41 kDa
Gene Name:	EGF like, fibronectin type III and laminin G domains
Database Link:	NP_001192230 Entrez Gene 133584 Human Q63HQ2
Background:	EGFLAM is involved in both the retinal photoreceptor ribbon synapse formation and physiological functions of visual perception. It is necessary for proper bipolar dendritic tip apposition to the photoreceptor ribbon synapse and promotes matrix assembly and cell adhesiveness.
Synonyms:	AGRINL; AGRNL; PIKA

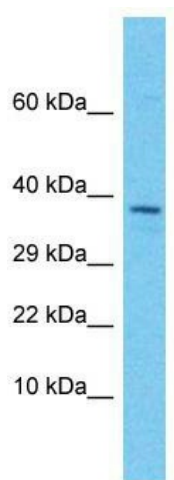


[View online »](#)

Note: Immunogen Sequence Homology: Dog: 100%; Pig: 100%; Rat: 100%; Horse: 100%; Human: 100%; Mouse: 100%; Bovine: 100%; Guinea pig: 100%; Rabbit: 93%

Protein Families: Transmembrane

Product images:



Host: Rabbit; Target Name: EGFLAM; Sample Tissue: Uterus Tumor lysates; Antibody Dilution: 1.0 ug/ml