

Product datasheet for **TA337597**

TCTE1 Rabbit Polyclonal Antibody

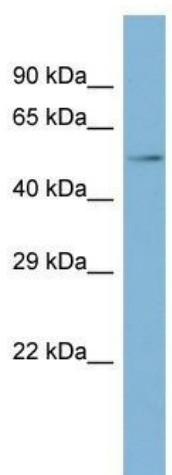
Product data:

Product Type:	Primary Antibodies
Applications:	WB
Recommended Dilution:	WB
Reactivity:	Human
Host:	Rabbit
Isotype:	IgG
Clonality:	Polyclonal
Immunogen:	The immunogen for Anti-TCTE1 antibody is: synthetic peptide directed towards the C-terminal region of Human TCTE1. Synthetic peptide located within the following region: LRVNLNANNQVRAPGAQSLAHLAHTNLISLNLRLNCIEDEGGQALAHA
Formulation:	Liquid. Purified antibody supplied in 1x PBS buffer with 0.09% (w/v) sodium azide and 2% sucrose. <i>Note that this product is shipped as lyophilized powder to China customers.</i>
Purification:	Affinity Purified
Conjugation:	Unconjugated
Storage:	Store at -20°C as received.
Stability:	Stable for 12 months from date of receipt.
Predicted Protein Size:	55 kDa
Gene Name:	t-complex-associated-testis-expressed 1
Database Link:	NP_872345 Entrez Gene 202500 Human Q5JU00
Background:	The function of this protein remains unknown.
Synonyms:	D6S46; DRC5; FAP155
Note:	Immunogen Sequence Homology: Pig: 100%; Rat: 100%; Horse: 100%; Human: 100%; Mouse: 100%; Rabbit: 92%; Guinea pig: 86%; Zebrafish: 79%



[View online »](#)

Product images:



Host: Rabbit; Target Name: TCTE1; Sample
Tissue: Fetal Stomach lysates; Antibody Dilution:
1.0 ug/ml