

## Product datasheet for **TA337595**

### THAP5 Rabbit Polyclonal Antibody

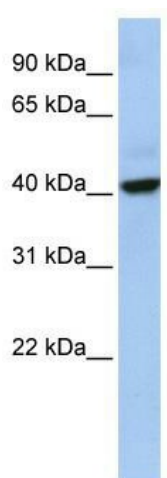
#### Product data:

Product Type:	Primary Antibodies
Applications:	WB
Recommended Dilution:	WB
Reactivity:	Human
Host:	Rabbit
Isotype:	IgG
Clonality:	Polyclonal
Immunogen:	The immunogen for anti-THAP5 antibody: synthetic peptide directed towards the middle region of human THAP5. Synthetic peptide located within the following region: TTITLTTSNSESIHQSLETQEVLEVTTSHLANPNFTSNSMEIKSAQENPF
Formulation:	Liquid. Purified antibody supplied in 1x PBS buffer with 0.09% (w/v) sodium azide and 2% sucrose.
Purification:	Affinity Purified
Conjugation:	Unconjugated
Storage:	Store at -20°C as received.
Stability:	Stable for 12 months from date of receipt.
Predicted Protein Size:	44 kDa
Gene Name:	THAP domain containing 5
Database Link:	<a href="#">NP_001123947</a> <a href="#">Entrez Gene 168451 Human</a> <a href="#">Q7Z6K1</a>
Background:	THAP5 contains 1 THAP-type zinc finger. The exact function of THAP5 remains unknown.
Synonyms:	DKFZp313O1132
Note:	Immunogen Sequence Homology: Human: 100%; Horse: 86%; Pig: 79%; Rat: 79%



[View online »](#)

## Product images:



WB Suggested Anti-THAP5 Antibody Titration: 0.2-1 ug/ml; ELISA Titer: 1: 312500; Positive Control: Human Placenta