

Product datasheet for **TA337591**

AASDH Rabbit Polyclonal Antibody

Product data:

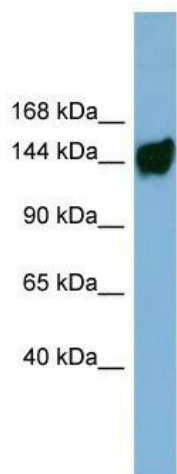
Product Type:	Primary Antibodies
Applications:	WB
Recommended Dilution:	WB
Reactivity:	Human
Host:	Rabbit
Isotype:	IgG
Clonality:	Polyclonal
Immunogen:	The immunogen for anti-AASDH antibody: synthetic peptide directed towards the middle region of human AASDH. Synthetic peptide located within the following region: TDGKVVILESQSGQLQSVYELPGEVFSSPVVLESMLIIGCRDNYVYCLDL
Formulation:	Liquid. Purified antibody supplied in 1x PBS buffer with 0.09% (w/v) sodium azide and 2% sucrose. <i>Note that this product is shipped as lyophilized powder to China customers.</i>
Purification:	Affinity Purified
Conjugation:	Unconjugated
Storage:	Store at -20°C as received.
Stability:	Stable for 12 months from date of receipt.
Predicted Protein Size:	122 kDa
Gene Name:	aminoadipate-semialdehyde dehydrogenase
Database Link:	NP_861522 Entrez Gene 132949 Human Q4L235
Background:	Acyl-CoA synthases catalyze the initial reaction in fatty acid metabolism, by forming a thioester with CoA.
Synonyms:	ACSF4; LYS2; NRPS998; NRPS1098
Note:	Immunogen Sequence Homology: Dog: 100%; Rat: 100%; Human: 100%; Mouse: 100%; Bovine: 100%; Rabbit: 100%; Pig: 93%; Horse: 93%; Guinea pig: 93%



[View online »](#)

Protein Pathways: Lysine biosynthesis, Lysine degradation, Metabolic pathways

Product images:



WB Suggested Anti-AASDH Antibody Titration:
0.2-1 ug/ml; ELISA Titer: 1: 312500; Positive
Control: ACHN cell lysate