

Product datasheet for **TA337590**

Lebercilin (LCA5) Rabbit Polyclonal Antibody

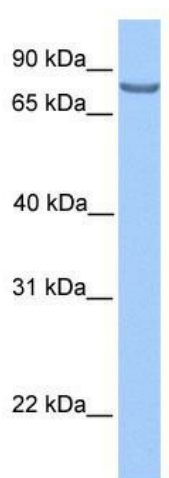
Product data:

Product Type:	Primary Antibodies
Applications:	WB
Recommended Dilution:	WB
Reactivity:	Human
Host:	Rabbit
Isotype:	IgG
Clonality:	Polyclonal
Immunogen:	The immunogen for anti-LCA5 antibody: synthetic peptide directed towards the N terminal of human LCA5. Synthetic peptide located within the following region: FSLQKLKEISEARHLPERDDLAKKLVSAELKLDDETERRIKELSKNLELST
Formulation:	Liquid. Purified antibody supplied in 1x PBS buffer with 0.09% (w/v) sodium azide and 2% sucrose.
Purification:	Affinity Purified
Conjugation:	Unconjugated
Storage:	Store at -20°C as received.
Stability:	Stable for 12 months from date of receipt.
Predicted Protein Size:	80 kDa
Gene Name:	LCA5, lebercilin
Database Link:	NP_859065 Entrez Gene 167691 Human Q86VQ0
Background:	LCA5 is a protein that is thought to be involved in centrosomal or ciliary functions. Mutations in this gene cause Leber congenital amaurosis type V. This gene encodes a protein that is thought to be involved in centrosomal or ciliary functions. Mutations in this gene cause Leber congenital amaurosis type V. Alternative splicing results in two transcript variants.
Synonyms:	C6orf152
Note:	Immunogen Sequence Homology: Dog: 100%; Pig: 100%; Rat: 100%; Horse: 100%; Human: 100%; Rabbit: 100%; Guinea pig: 100%; Mouse: 93%; Bovine: 92%



[View online »](#)

Product images:



WB Suggested Anti-LCA5 Antibody Titration: 0.2-1 ug/ml; Positive Control: HepG2 cell lysate