

Product datasheet for **TA337588**

FAM101A (RFLNA) Rabbit Polyclonal Antibody

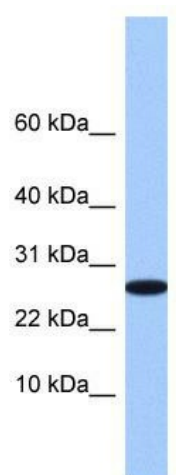
Product data:

Product Type:	Primary Antibodies
Applications:	WB
Recommended Dilution:	WB
Reactivity:	Human
Host:	Rabbit
Isotype:	IgG
Clonality:	Polyclonal
Immunogen:	The immunogen for anti-FAM101A antibody: synthetic peptide directed towards the middle region of human FAM101A. Synthetic peptide located within the following region: QLTLEPRPRALRFRSTTIIFPKHARSTFRRTLHCSLGRPSRWFTASVQLQ
Formulation:	Liquid. Purified antibody supplied in 1x PBS buffer with 0.09% (w/v) sodium azide and 2% sucrose.
Purification:	Affinity Purified
Conjugation:	Unconjugated
Storage:	Store at -20°C as received.
Stability:	Stable for 12 months from date of receipt.
Predicted Protein Size:	24 kDa
Gene Name:	family with sequence similarity 101 member A
Database Link:	NP_859060 Entrez Gene 144347 Human Q6ZTI6
Background:	FAM101A belongs to the FAM101 family. The exact function of FAM101A remains unknown.
Synonyms:	CFM2; FAM101A
Note:	Immunogen Sequence Homology: Dog: 100%; Human: 100%; Pig: 86%; Rat: 86%; Mouse: 86%; Horse: 85%; Guinea pig: 85%; Zebrafish: 77%



[View online »](#)

Product images:



WB Suggested Anti-FAM101A Antibody Titration:
0.2-1 ug/ml; Positive Control: 721_B cell lysate