

Product datasheet for **TA337587**

C17orf64 Rabbit Polyclonal Antibody

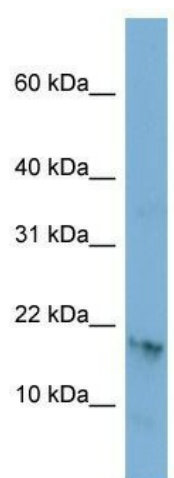
Product data:

Product Type:	Primary Antibodies
Applications:	WB
Recommended Dilution:	WB
Reactivity:	Human
Host:	Rabbit
Isotype:	IgG
Clonality:	Polyclonal
Immunogen:	The immunogen for anti-C17orf64 antibody: synthetic peptide directed towards the middle region of human C17orf64. Synthetic peptide located within the following region: NMQTPGQGSPLPGQPRSQDHSVKKDSLRELSQKPKLKRRIKEAPETPETE
Formulation:	Liquid. Purified antibody supplied in 1x PBS buffer with 0.09% (w/v) sodium azide and 2% sucrose. <i>Note that this product is shipped as lyophilized powder to China customers.</i>
Purification:	Affinity Purified
Conjugation:	Unconjugated
Storage:	Store at -20°C as received.
Stability:	Stable for 12 months from date of receipt.
Predicted Protein Size:	14 kDa
Gene Name:	chromosome 17 open reading frame 64
Database Link:	NP_859058 Entrez Gene 124773 Human Q86WR6
Background:	The function of this protein remains unknown.
Synonyms:	C17orf64
Note:	Immunogen Sequence Homology: Horse: 100%; Human: 100%; Pig: 92%; Rabbit: 92%; Dog: 85%; Bovine: 85%; Yeast: 83%



[View online »](#)

Product images:



WB Suggested Anti-C17orf64 Antibody Titration:
0.2-1 ug/ml; ELISA Titer: 1: 1562500; Positive
Control: PANC1 cell lysate