

Product datasheet for **TA337586**

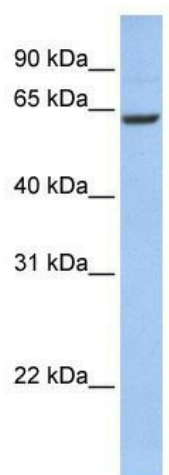
CCDC67 (DEUP1) Rabbit Polyclonal Antibody

Product data:

| | |
|-------------------------|--|
| Product Type: | Primary Antibodies |
| Applications: | WB |
| Recommended Dilution: | WB |
| Reactivity: | Human |
| Host: | Rabbit |
| Isotype: | IgG |
| Clonality: | Polyclonal |
| Immunogen: | The immunogen for anti-CCDC67 antibody: synthetic peptide directed towards the N terminal of human CCDC67. Synthetic peptide located within the following region: RKMRALETRLDLRDQELANAQTCLDQKGQEVGLLRQKLDLSLEKCNLAMTQ |
| Formulation: | Liquid. Purified antibody supplied in 1x PBS buffer with 0.09% (w/v) sodium azide and 2% sucrose. |
| Purification: | Affinity Purified |
| Conjugation: | Unconjugated |
| Storage: | Store at -20°C as received. |
| Stability: | Stable for 12 months from date of receipt. |
| Predicted Protein Size: | 71 kDa |
| Gene Name: | coiled-coil domain containing 67 |
| Database Link: | NP_857596 Entrez Gene 159989 Human Q05D60 |
| Background: | The exact function of CCDC67 remains unknown. |
| Synonyms: | FLJ25393 |
| Note: | Immunogen Sequence Homology: Dog: 100%; Pig: 100%; Rat: 100%; Horse: 100%; Human: 100%; Mouse: 100%; Bovine: 100%; Rabbit: 100%; Guinea pig: 100% |



[View online »](#)

Product images:

WB Suggested Anti-CCDC67 Antibody Titration:
0.2-1 ug/ml; ELISA Titer: 1: 62500; Positive
Control: 721_B cell lysate