

Product datasheet for **TA337585**

MFSD4 (MFSD4A) Rabbit Polyclonal Antibody

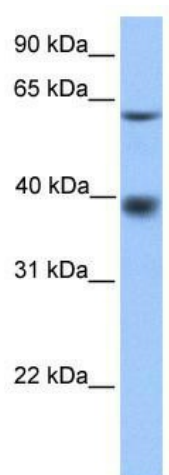
Product data:

Product Type:	Primary Antibodies
Applications:	WB
Recommended Dilution:	WB
Reactivity:	Human
Host:	Rabbit
Isotype:	IgG
Clonality:	Polyclonal
Immunogen:	The immunogen for anti-MFSD4 antibody: synthetic peptide directed towards the N terminal of human MFSD4. Synthetic peptide located within the following region: FGALLSPLIADPFLSEANCLPANSTANTTSRGHLFHVSRVLGQHHVDAKP
Formulation:	Liquid. Purified antibody supplied in 1x PBS buffer with 0.09% (w/v) sodium azide and 2% sucrose. <i>Note that this product is shipped as lyophilized powder to China customers.</i>
Purification:	Affinity Purified
Conjugation:	Unconjugated
Storage:	Store at -20°C as received.
Stability:	Stable for 12 months from date of receipt.
Predicted Protein Size:	56 kDa
Gene Name:	major facilitator superfamily domain containing 4A
Database Link:	NP_857595 Entrez Gene 148808 Human Q8N468
Background:	MFSD4 is a multi-pass membrane protein. It belongs to the major facilitator superfamily.
Synonyms:	MFSD4; UNQ3064
Note:	Immunogen Sequence Homology: Human: 100%; Bovine: 91%; Rat: 77%; Mouse: 77%
Protein Families:	Transmembrane



[View online »](#)

Product images:



WB Suggested Anti-MFSD4 Antibody Titration:
0.2-1 ug/ml; Positive Control: Human Muscle