

Product datasheet for **TA337584**

IL24 Rabbit Polyclonal Antibody

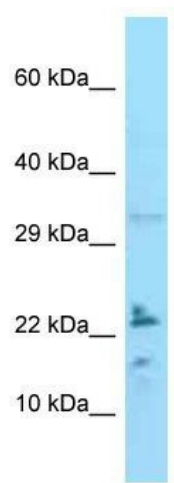
Product data:

Product Type:	Primary Antibodies
Applications:	WB
Recommended Dilution:	WB
Reactivity:	Human
Host:	Rabbit
Isotype:	IgG
Clonality:	Polyclonal
Immunogen:	The immunogen for Anti-IL24 antibody is: synthetic peptide directed towards the C-terminal region of IL24. Synthetic peptide located within the following region: STLANNFVLIVSQLQPSQENEMFSIRDSAHRRFLLFRRAFKQLDVEAALT
Formulation:	Liquid. Purified antibody supplied in 1x PBS buffer with 0.09% (w/v) sodium azide and 2% sucrose. <i>Note that this product is shipped as lyophilized powder to China customers.</i>
Purification:	Affinity Purified
Conjugation:	Unconjugated
Storage:	Store at -20°C as received.
Stability:	Stable for 12 months from date of receipt.
Predicted Protein Size:	22 kDa
Gene Name:	interleukin 24
Database Link:	NP_001172085 Entrez Gene 11009 Human Q13007



[View online »](#)

- Background:** This gene encodes a member of the IL10 family of cytokines. It was identified as a gene induced during terminal differentiation in melanoma cells. The protein encoded by this gene can induce apoptosis selectively in various cancer cells. Overexpression of this gene leads to elevated expression of several GADD family genes, which correlates with the induction of apoptosis. The phosphorylation of mitogen-activated protein kinase 14 (MAPK7/P38), and heat shock 27kDa protein 1 (HSPB2/HSP27) are found to be induced by this gene in melanoma cells, but not in normal immortal melanocytes. Alternatively spliced transcript variants encoding distinct isoforms have been reported.
- Synonyms:** C49A; FISP; IL10B; MDA7; MOB5; ST16
- Note:** Immunogen Sequence Homology: Human: 100%; Rat: 85%; Horse: 85%; Mouse: 85%; Dog: 77%
- Protein Families:** Druggable Genome, Secreted Protein
- Protein Pathways:** Cytokine-cytokine receptor interaction, Jak-STAT signaling pathway
- Product images:**



WB Suggested Anti-IL24 Antibody; Titration: 1.0 ug/ml; Positive Control: HepG2 Whole Cell