

Product datasheet for **TA337582**

LAYN Rabbit Polyclonal Antibody

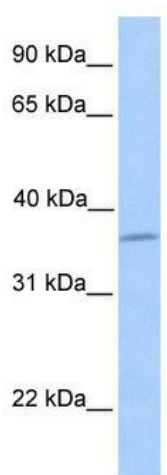
Product data:

Product Type:	Primary Antibodies
Applications:	WB
Recommended Dilution:	WB
Reactivity:	Human
Host:	Rabbit
Isotype:	IgG
Clonality:	Polyclonal
Immunogen:	The immunogen for anti-LAYN antibody: synthetic peptide directed towards the N terminal of human LAYN. Synthetic peptide located within the following region: CYKVIYFHDTSRRLNFEEAKEACRRDGGQLVSIESTEDEQKLIKFIENLL
Formulation:	Liquid. Purified antibody supplied in 1x PBS buffer with 0.09% (w/v) sodium azide and 2% sucrose. <i>Note that this product is shipped as lyophilized powder to China customers.</i>
Purification:	Affinity Purified
Conjugation:	Unconjugated
Storage:	Store at -20°C as received.
Stability:	Stable for 12 months from date of receipt.
Predicted Protein Size:	42 kDa
Gene Name:	layilin
Database Link:	NP_849156 Entrez Gene 143903 Human Q6UX15
Background:	LAYN contains 1 C-type lectin domain. It is the receptor for hyaluronate.
Synonyms:	FLJ30977; FLJ31092
Note:	Immunogen Sequence Homology: Human: 100%; Rabbit: 93%; Dog: 92%; Horse: 92%; Bovine: 91%; Rat: 86%; Pig: 85%; Guinea pig: 85%; Mouse: 79%
Protein Families:	Transmembrane



[View online »](#)

Product images:



WB Suggested Anti-LAYN Antibody Titration: 0.2-1 ug/ml; Positive Control: MCF7 cell lysate