

## Product datasheet for **TA337581**

### NHEDC2 (SLC9B2) Rabbit Polyclonal Antibody

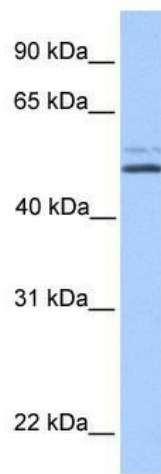
#### Product data:

Product Type:	Primary Antibodies
Applications:	WB
Recommended Dilution:	WB
Reactivity:	Human
Host:	Rabbit
Isotype:	IgG
Clonality:	Polyclonal
Immunogen:	The immunogen for anti-SLC9B2 antibody: synthetic peptide directed towards the C terminal of human SLC9B2. Synthetic peptide located within the following region: IFISFAWLPKATVQAAIGSVALDTARSHGEKQLEDYGMDVLTVAFLSILI
Formulation:	Liquid. Purified antibody supplied in 1x PBS buffer with 0.09% (w/v) sodium azide and 2% sucrose.
Purification:	Affinity Purified
Conjugation:	Unconjugated
Storage:	Store at -20°C as received.
Stability:	Stable for 12 months from date of receipt.
Predicted Protein Size:	57 kDa
Gene Name:	solute carrier family 9 member B2
Database Link:	<a href="#">NP_849155</a> <a href="#">Entrez Gene 133308 Human</a> <a href="#">Q86UD5</a>



[View online »](#)

- Background:** Sodium hydrogen antiporters, such as SLC9B2, convert the proton motive force established by the respiratory chain or the F1F0 mitochondrial ATPase into sodium gradients that drive other energy-requiring processes, transduce environmental signals into cell responses, or function in drug efflux. Sodium hydrogen antiporters, such as SLC9B2, convert the proton motive force established by the respiratory chain or the F1F0 mitochondrial ATPase into sodium gradients that drive other energy-requiring processes, transduce environmental signals into cell responses, or function in drug efflux (Xiang et al., 2007 [PubMed 18000046]). [supplied by OMIM]
- Synonyms:** NHA2; NHE10; NHEDC2
- Note:** Immunogen Sequence Homology: Rat: 100%; Horse: 100%; Human: 100%; Mouse: 100%; Bovine: 93%; Rabbit: 93%; Dog: 86%; Pig: 86%; Guinea pig: 83%
- Protein Families:** Druggable Genome, Transmembrane

**Product images:**

WB Suggested Anti-SLC9B2 Antibody Titration:  
0.2-1 ug/ml; Positive Control: NTERA2 cell lysate