

Product datasheet for **TA337578**

WDR49 Rabbit Polyclonal Antibody

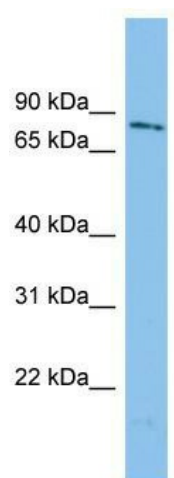
Product data:

Product Type:	Primary Antibodies
Applications:	WB
Recommended Dilution:	WB
Reactivity:	Human
Host:	Rabbit
Isotype:	IgG
Clonality:	Polyclonal
Immunogen:	The immunogen for anti-WDR49 antibody: synthetic peptide directed towards the N terminal of human WDR49. Synthetic peptide located within the following region: SQDFRCLFHFDEAHGRLFISFNNQLALLAMKSEASKRVKSHEKAVTCVLY
Formulation:	Liquid. Purified antibody supplied in 1x PBS buffer with 0.09% (w/v) sodium azide and 2% sucrose. <i>Note that this product is shipped as lyophilized powder to China customers.</i>
Purification:	Affinity Purified
Conjugation:	Unconjugated
Storage:	Store at -20°C as received.
Stability:	Stable for 12 months from date of receipt.
Predicted Protein Size:	79 kDa
Gene Name:	WD repeat domain 49
Database Link:	NP_849146 Entrez Gene 151790 Human
Background:	WDR49 contains 8 WD repeats. The exact function of WDR49 remains unknown.
Synonyms:	FLJ33620
Note:	Immunogen Sequence Homology: Human: 100%; Rabbit: 100%; Horse: 92%; Pig: 86%; Rat: 86%; Mouse: 86%; Bovine: 79%



[View online »](#)

Product images:



WB Suggested Anti-WDR49 Antibody Titration:
0.2-1 ug/ml; ELISA Titer: 1: 1562500; Positive
Control: A549 cell lysate