

Product datasheet for **TA337577**

CCDC60 Rabbit Polyclonal Antibody

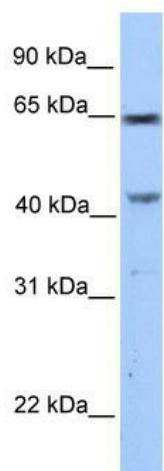
Product data:

Product Type:	Primary Antibodies
Applications:	WB
Recommended Dilution:	WB
Reactivity:	Human
Host:	Rabbit
Isotype:	IgG
Clonality:	Polyclonal
Immunogen:	The immunogen for anti-CCDC60 antibody: synthetic peptide directed towards the C terminal of human CCDC60. Synthetic peptide located within the following region: RPAKKILVKLQKFGENLDRIRPHVLLKVLQDLRIWELCSPDIAVAIEFV
Formulation:	Liquid. Purified antibody supplied in 1x PBS buffer with 0.09% (w/v) sodium azide and 2% sucrose.
Purification:	Affinity Purified
Conjugation:	Unconjugated
Storage:	Store at -20°C as received.
Stability:	Stable for 12 months from date of receipt.
Predicted Protein Size:	63 kDa
Gene Name:	coiled-coil domain containing 60
Database Link:	NP_848594 Entrez Gene 160777 Human Q8IWA6
Background:	The exact function of CCDC60 remains unknown.
Synonyms:	MGC39827
Note:	Immunogen Sequence Homology: Dog: 100%; Pig: 100%; Rat: 100%; Horse: 100%; Human: 100%; Mouse: 100%; Bovine: 100%; Rabbit: 100%; Guinea pig: 93%



[View online »](#)

Product images:



WB Suggested Anti-CCDC60 Antibody Titration:
0.2-1 ug/ml; Positive Control: MCF7 cell lysate