

## Product datasheet for TA337576

### C3orf59 (MB21D2) Rabbit Polyclonal Antibody

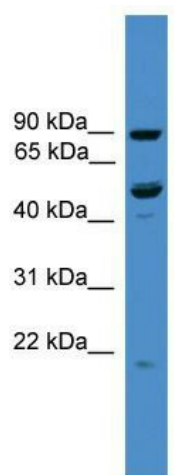
#### Product data:

Product Type:	Primary Antibodies
Applications:	WB
Recommended Dilution:	WB
Reactivity:	Human
Host:	Rabbit
Isotype:	IgG
Clonality:	Polyclonal
Immunogen:	The immunogen for anti-MB21D2 antibody: synthetic peptide directed towards the C terminal of human C3orf59. Synthetic peptide located within the following region: QSDGGDPNQPDRLAKKLQQLVTENPGKSISVFINPDDVTRPHFRIDDKF
Formulation:	Liquid. Purified antibody supplied in 1x PBS buffer with 0.09% (w/v) sodium azide and 2% sucrose. <i>Note that this product is shipped as lyophilized powder to China customers.</i>
Purification:	Affinity Purified
Conjugation:	Unconjugated
Storage:	Store at -20°C as received.
Stability:	Stable for 12 months from date of receipt.
Predicted Protein Size:	55 kDa
Gene Name:	Mab-21 domain containing 2
Database Link:	<a href="#">NP_848591</a> <a href="#">Entrez Gene 151963 Human</a> <a href="#">Q8IYB1</a>
Background:	The function of MB21D2 remains unknown.
Synonyms:	C3orf59
Note:	Immunogen Sequence Homology: Dog: 100%; Pig: 100%; Rat: 100%; Horse: 100%; Human: 100%; Mouse: 100%; Bovine: 100%; Rabbit: 100%; Zebrafish: 100%; Guinea pig: 100%



[View online »](#)

## Product images:



WB Suggested Anti-MB21D2 Antibody Titration:  
0.2-1 ug/ml; ELISA Titer: 1: 1562500; Positive  
Control: 293T cell lysate