

Product datasheet for **TA337575**

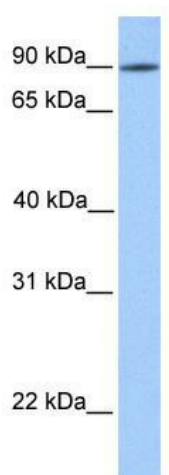
LRRC50 (DNAAF1) Rabbit Polyclonal Antibody

Product data:

Product Type:	Primary Antibodies
Applications:	WB
Recommended Dilution:	WB
Reactivity:	Human
Host:	Rabbit
Isotype:	IgG
Clonality:	Polyclonal
Immunogen:	The immunogen for anti-DNAAF1 antibody: synthetic peptide directed towards the N terminal of human LRRC50. Synthetic peptide located within the following region: TELRLCLFLQMNLRLKIKENLEPLQKLDALNLSNNYIKTIENLSCLPVLNLT
Formulation:	Liquid. Purified antibody supplied in 1x PBS buffer with 0.09% (w/v) sodium azide and 2% sucrose. <i>Note that this product is shipped as lyophilized powder to China customers.</i>
Purification:	Affinity Purified
Conjugation:	Unconjugated
Storage:	Store at -20°C as received.
Stability:	Stable for 12 months from date of receipt.
Predicted Protein Size:	80 kDa
Gene Name:	dynein (axonemal) assembly factor 1
Database Link:	NP_848547 Entrez Gene 123872 Human Q8NEP3
Background:	DNAAF1 contains 6 LRR (leucine-rich) repeats. It is proposed that DNAAF1 to be a novel candidate gene for human cystic kidney disease, involved in regulation of microtubule-based cilia and actin-based brush border microvilli.
Synonyms:	CILD13; LRRC50; ODA7; swt
Note:	Immunogen Sequence Homology: Pig: 100%; Rat: 100%; Human: 100%; Mouse: 100%; Bovine: 100%; Guinea pig: 100%; Dog: 93%; Horse: 93%



[View online »](#)

Product images:

WB Suggested Anti-DNAAF1 Antibody Titration:
0.2-1 ug/ml; Positive Control: 721_B cell lysate
DNAAF1 is supported by BioGPS gene expression
data to be expressed in 721_B