

Product datasheet for **TA337574**

LRRC50 (DNAAF1) Rabbit Polyclonal Antibody

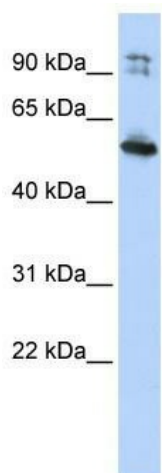
Product data:

Product Type:	Primary Antibodies
Applications:	WB
Recommended Dilution:	WB
Reactivity:	Human
Host:	Rabbit
Isotype:	IgG
Clonality:	Polyclonal
Immunogen:	The immunogen for anti-DNAAF1 antibody: synthetic peptide directed towards the N terminal of human LRRC50. Synthetic peptide located within the following region: LNDTLYLHFKGFDRLENLEEYTGRLCLWLQSNIGIKIENLEAQTELRLCF
Formulation:	Liquid. Purified antibody supplied in 1x PBS buffer with 0.09% (w/v) sodium azide and 2% sucrose. <i>Note that this product is shipped as lyophilized powder to China customers.</i>
Purification:	Affinity Purified
Conjugation:	Unconjugated
Storage:	Store at -20°C as received.
Stability:	Stable for 12 months from date of receipt.
Predicted Protein Size:	80 kDa
Gene Name:	dynein (axonemal) assembly factor 1
Database Link:	NP_848547 Entrez Gene 123872 Human Q8NEP3
Background:	DNAAF1 contains 6 LRR (leucine-rich) repeats. It is proposed that DNAAF1 to be a novel candidate gene for human cystic kidney disease, involved in regulation of microtubule-based cilia and actin-based brush border microvilli.
Synonyms:	CILD13; LRRC50; ODA7; swt
Note:	Immunogen Sequence Homology: Rat: 100%; Horse: 100%; Human: 100%; Mouse: 100%; Dog: 93%; Pig: 93%; Bovine: 93%; Guinea pig: 93%; Zebrafish: 79%



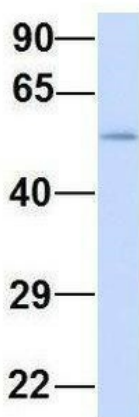
[View online »](#)

Product images:



WB Suggested Anti-DNAAF1 Antibody Titration:
0.2-1 ug/ml; ELISA Titer: 1: 1562500; Positive
Control: HepG2 cell lysate

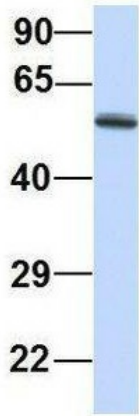
DNAAF1



Rabbit Anti-DNAAF1
Sample Type: Human Fetal
Muscle
Antibody Concentration: 1ug/mL

Host: Rabbit; Target Name: DNAAF1; Sample
Tissue: Human Fetal Muscle; Antibody Dilution:
1.0 ug/ml

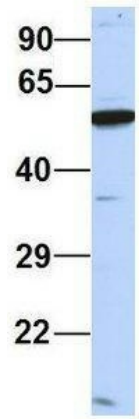
DNAAF1



Rabbit Anti-DNAAF1
Sample Type: Human Fetal Lung
Antibody Concentration: 1ug/mL

Host: Rabbit; Target Name: DNAAF1; Sample
Tissue: Human Fetal Lung; Antibody Dilution: 1.0
ug/ml

DNAAF1



Rabbit Anti-DNAAF1
Sample Type: Human 721_B
Antibody Concentration: 1ug/mL

Host: Rabbit; Target Name: DNAAF1; Sample
Tissue: Human 721_B; Antibody Dilution: 1.0
ug/ml DNAAF1 is supported by BioGPS gene
expression data to be expressed in 721_B