

## Product datasheet for **TA337573**

### Tuberoinfundibular peptide (PTH2) Rabbit Polyclonal Antibody

#### Product data:

Product Type:	Primary Antibodies
Applications:	WB
Recommended Dilution:	WB
Reactivity:	Human
Host:	Rabbit
Isotype:	IgG
Clonality:	Polyclonal
Immunogen:	The immunogen for anti-PTH2 antibody: synthetic peptide directed towards the middle region of human PTH2. Synthetic peptide located within the following region: WADPATPRRRSLALADDAAFRERARLLAALERRHWLNSYMHKLLVLDAP
Formulation:	Liquid. Purified antibody supplied in 1x PBS buffer with 0.09% (w/v) sodium azide and 2% sucrose. <i>Note that this product is shipped as lyophilized powder to China customers.</i>
Purification:	Affinity Purified
Conjugation:	Unconjugated
Storage:	Store at -20°C as received.
Stability:	Stable for 12 months from date of receipt.
Predicted Protein Size:	11 kDa
Gene Name:	parathyroid hormone 2
Database Link:	<a href="#">NP_848544</a> <a href="#">Entrez Gene 113091 Human</a> <a href="#">Q96A98</a>
Background:	TIP39 is related to parathyroid hormone (PTH) and PTH-related protein (PTHrP) and is a ligand for PTH receptor-2. TIP39 is related to parathyroid hormone (PTH; MIM 168450) and PTH-related protein (PTHrP; MIM 168470) and is a ligand for PTH receptor-2 (PTHr2; MIM 601469) (John et al., 2002 [PubMed 11861531]). [supplied by OMIM]
Synonyms:	TIP39

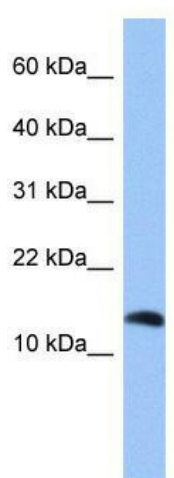


[View online »](#)

**Note:** Immunogen Sequence Homology: Dog: 100%; Pig: 100%; Rat: 100%; Horse: 100%; Human: 100%; Mouse: 100%; Bovine: 100%; Guinea pig: 100%; Rabbit: 93%

**Protein Families:** Secreted Protein, Transmembrane

**Product images:**



WB Suggested Anti-PTH2 Antibody Titration: 0.2-1 ug/ml; Positive Control: HepG2 cell lysate