

## Product datasheet for **TA337571**

### CCDC50 Rabbit Polyclonal Antibody

#### Product data:

Product Type:	Primary Antibodies
Applications:	WB
Recommended Dilution:	WB
Reactivity:	Human
Host:	Rabbit
Isotype:	IgG
Clonality:	Polyclonal
Immunogen:	The immunogen for anti-CCDC50 antibody: synthetic peptide directed towards the middle region of human CCDC50. Synthetic peptide located within the following region: GMKPRVMKEAVSTPSRMAHRDQEWYDAEIARKLQEEELLATQVDMRAAQV
Formulation:	Liquid. Purified antibody supplied in 1x PBS buffer with 0.09% (w/v) sodium azide and 2% sucrose. <i>Note that this product is shipped as lyophilized powder to China customers.</i>
Purification:	Affinity Purified
Conjugation:	Unconjugated
Storage:	Store at -20°C as received.
Stability:	Stable for 12 months from date of receipt.
Predicted Protein Size:	56 kDa
Gene Name:	coiled-coil domain containing 50
Database Link:	<a href="#">NP_848018</a> <a href="#">Entrez Gene 152137 Human</a> <a href="#">Q8IVM0</a>
Background:	CCDC50 is a soluble, cytoplasmic, tyrosine-phosphorylated protein with multiple ubiquitin-interacting domains. Mutations in this gene cause nonsyndromic, postlingual, progressive sensorineural DFNA44 hearing loss. In mouse, the protein is expressed in the inner ear during development and postnatal maturation and associates with microtubule-based structures. This protein may also function as a negative regulator of NF-κB signaling and as an effector of epidermal growth factor (EGF)-mediated cell signaling.

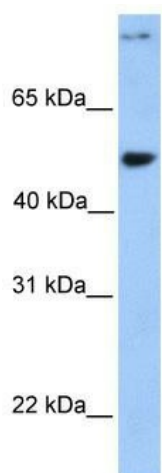


[View online »](#)

**Synonyms:** C3orf6; DFNA44; YMER

**Note:** Immunogen Sequence Homology: Dog: 100%; Pig: 100%; Rat: 100%; Horse: 100%; Human: 100%; Mouse: 100%; Bovine: 100%; Rabbit: 100%; Guinea pig: 100%; Zebrafish: 77%

**Product images:**



WB Suggested Anti-CCDC50 Antibody Titration:  
0.2-1 ug/ml; Positive Control: 721\_B cell lysate