

Product datasheet for **TA337569**

ASB6 Rabbit Polyclonal Antibody

Product data:

Product Type:	Primary Antibodies
Applications:	WB
Recommended Dilution:	WB
Reactivity:	Human
Host:	Rabbit
Isotype:	IgG
Clonality:	Polyclonal
Immunogen:	The immunogen for anti-ASB6 antibody: synthetic peptide directed towards the middle region of human ASB6. Synthetic peptide located within the following region: LKMAELGLTRAADVLLRHGANLNFEDPVTTYTALHIAVLRNQPDMVELLV
Formulation:	Liquid. Purified antibody supplied in 1x PBS buffer with 0.09% (w/v) sodium azide and 2% sucrose. <i>Note that this product is shipped as lyophilized powder to China customers.</i>
Purification:	Affinity Purified
Conjugation:	Unconjugated
Storage:	Store at -20°C as received.
Stability:	Stable for 12 months from date of receipt.
Predicted Protein Size:	46 kDa
Gene Name:	ankyrin repeat and SOCS box containing 6
Database Link:	NP_060343 Entrez Gene 140459 Human Q9NWX5



[View online »](#)

Background:

ASB6 belongs to a family of ankyrin repeat proteins that, along with four other protein families, contain a C-terminal SOCS box motif. Growing evidence suggests that the SOCS box, similar to the F-box, acts as a bridge between specific substrate-binding domains and the more generic proteins that comprise a large family of E3 ubiquitin protein ligases. The protein encoded by this gene belongs to a family of ankyrin repeat proteins that, along with four other protein families, contain a C-terminal SOCS box motif. Growing evidence suggests that the SOCS box, similar to the F-box, acts as a bridge between specific substrate-binding domains and the more generic proteins that comprise a large family of E3 ubiquitin protein ligases.

Synonyms:

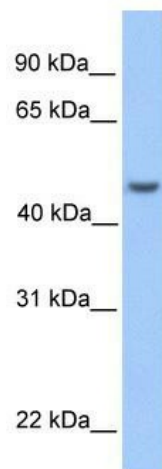
FLJ20548; MGC1024

Note:

Immunogen Sequence Homology: Rat: 100%; Human: 100%; Mouse: 100%; Dog: 93%; Pig: 93%; Horse: 93%; Bovine: 93%; Guinea pig: 93%; Zebrafish: 79%

Protein Families:

Druggable Genome

Product images:

WB Suggested Anti-ASB6 Antibody Titration: 0.2-1 ug/ml; Positive Control: 721_B cell lysate ASB6 is supported by BioGPS gene expression data to be expressed in 721_B