

## Product datasheet for **TA337568**

### PDE12 Rabbit Polyclonal Antibody

#### Product data:

Product Type:	Primary Antibodies
Applications:	WB
Recommended Dilution:	WB
Reactivity:	Human
Host:	Rabbit
Isotype:	IgG
Clonality:	Polyclonal
Immunogen:	The immunogen for anti-PDE12 antibody: synthetic peptide directed towards the middle region of human 2'-PDE. Synthetic peptide located within the following region: CLDYIFIDLNALEVEQVIPLPSHEEVTTTHQALPSVSHPSDHIALVCDLKW
Formulation:	Liquid. Purified antibody supplied in 1x PBS buffer with 0.09% (w/v) sodium azide and 2% sucrose. <i>Note that this product is shipped as lyophilized powder to China customers.</i>
Purification:	Affinity Purified
Conjugation:	Unconjugated
Storage:	Store at -20°C as received.
Stability:	Stable for 12 months from date of receipt.
Predicted Protein Size:	67 kDa
Gene Name:	phosphodiesterase 12
Database Link:	<a href="#">NP_808881</a> <a href="#">Entrez Gene 201626 Human</a> <a href="#">Q6L8Q7</a>



[View online »](#)

**Background:**

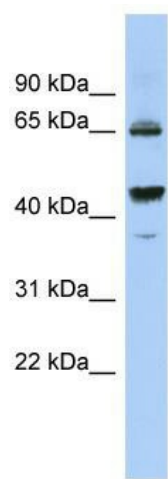
2'-PDE is an enzyme that cleaves 2',5'-phosphodiester bond linking adenosines of the 5'-triphosphorylated oligoadenylates, triphosphorylated oligoadenylates referred as 2-5A modulates the 2-5A system. This enzyme degraded triphosphorylated 2-5A to produce AMP and ATP. 2'-PDE also cleaves 3',5'-phosphodiester bond of oligoadenylates. 2'-PDE play a role as a negative regulator of the 2-5A system that is one of the major pathways for antiviral and antitumor functions induced by interferons (IFNs). Suppression of this enzyme induces reduction of viral replication in Hela cells, thus counteracting the antiviral pathway probably by inhibiting the 2-5A system.

**Synonyms:**

2'-PDE; 2'-PDE; 2-PDE

**Note:**

Immunogen Sequence Homology: Dog: 100%; Pig: 100%; Rat: 100%; Horse: 100%; Human: 100%; Mouse: 100%; Bovine: 100%; Rabbit: 100%; Guinea pig: 100%

**Product images:**

WB Suggested Anti-PDE12 Antibody Titration: 0.2-1 ug/ml; ELISA Titer: 1: 1562500; Positive Control: OVCAR-3 cell lysate PDE12 is supported by BioGPS gene expression data to be expressed in OVCAR3