

Product datasheet for **TA337563**

DHFRL1 (DHFR2) Rabbit Polyclonal Antibody

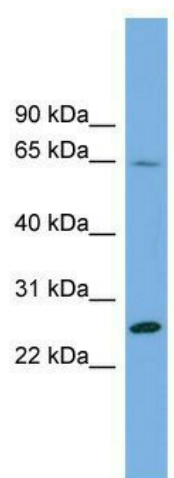
Product data:

Product Type:	Primary Antibodies
Applications:	WB
Recommended Dilution:	WB
Reactivity:	Human
Host:	Rabbit
Isotype:	IgG
Clonality:	Polyclonal
Immunogen:	The immunogen for anti-DHFRL1 antibody: synthetic peptide directed towards the middle region of human DHFRL1. Synthetic peptide located within the following region: RINLVLSRELKEPPQGAHFLARSLDDALKLTERPELANKVDMIWIVGGSS
Formulation:	Liquid. Purified antibody supplied in 1x PBS buffer with 0.09% (w/v) sodium azide and 2% sucrose. <i>Note that this product is shipped as lyophilized powder to China customers.</i>
Purification:	Affinity Purified
Conjugation:	Unconjugated
Storage:	Store at -20°C as received.
Stability:	Stable for 12 months from date of receipt.
Predicted Protein Size:	21 kDa
Gene Name:	dihydrofolate reductase like 1
Database Link:	NP_789785 Entrez Gene 200895 Human Q86XF0
Background:	DHFRL1 may play a role in folate metabolism.
Synonyms:	DHFRP4
Note:	Immunogen Sequence Homology: Human: 100%; Dog: 93%; Pig: 93%; Rat: 93%; Guinea pig: 93%; Horse: 92%; Mouse: 92%; Bovine: 92%; Rabbit: 86%
Protein Families:	Druggable Genome



[View online »](#)

Product images:



WB Suggested Anti-DHFRL1 Antibody Titration:
0.2-1 ug/ml; ELISA Titer: 1: 312500; Positive
Control: THP-1 cell lysate